

SWIVEL EYE SNAP SHACKLE
HSW16EK

- SS 316
- HEC



SPRING HOOK EYE & NUT
HHK16SN

- SS 316
- HEC



PELICAN HOOKS

- Metric
- SS 316



SPRING HOOK

- Metric
- SS 316



ROPE CLEAT

- Metric
- SS 316



SPRING HOOK W/EYE

- Metric
- SS 316



S HOOK / SYMETRICAL S HOOK

- Metric
- SS 304



QUICK LINK

- Metric
- SS 316



C LINK

- Metric
- SS 316



SPRING SNAP HOOK CAST

- Metric
- SS 316



SWIVELS
JAW/JAW

- Metric
- SS 316



SNAP HOOK ASYMETRIC

- Metric
- SS 316



SWIVELS
JAW/EYE

- Metric
- SS 316



S-HOOKS

- Metric
- SS 304



SWIVELS
EYE/EYE

- Metric
- SS 316



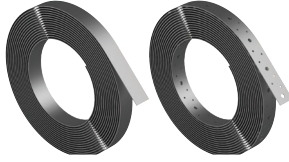
CHAIN SHORT LINK / MEDIUM LINK

- Metric
- SS 304, SS 316



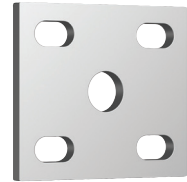
GALVANISED BRACING STRAP 0.8 X 30MM
GSBMG08

- Z275
- AS1684
- Punched and Unpunched



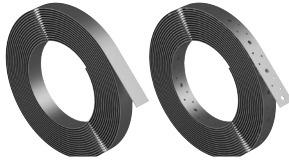
FISH PLATE FOR 40-50mm AXLE
HPFGS

- Hot Dip Galvanised
- Mild Steel



GALVANISED BRACING STRAP 1.0 X 30MM
GSBMG10

- Z275
- AS1684
- Punched and Unpunched



ANCHOR HOOKS

- Metric
- SS 316



BRACING STRAP TENSIONER
GSTMGFW30

- Z275
- Wing nut assembly
- Used to tension bracing strap



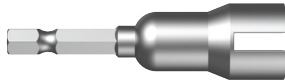
U SHAPE WITH BAR POST SUPPORT
GUPSB

- SS 316
- HEC



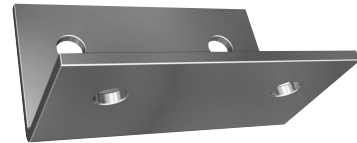
WING NUT TENSIONER
TXDDPWN25

- Alloy Steel
- 1/4" Drive Bit
- Use with GSTMGFW30 Tensioner



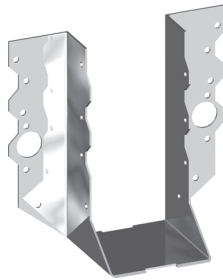
TIMBER ANGLE CONNECTOR M12
GACGT12

- Hot Dip Galvanised
- HEC
- Mild Steel



JOIST HANGER
HHJ16D

- SS 316
- HEC



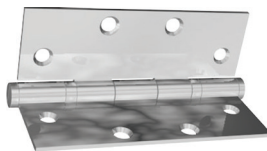
ANGLE BRACKET M16 / 2 HOLES
GABGSS16

- Hot Dip Galvanised
- HEC
- Mild Steel



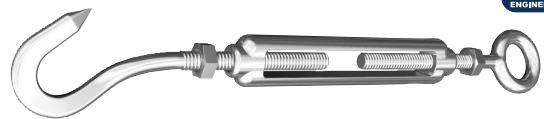
BUTT HINGE 8 HOLE
FIXED PIN
HHB04D-100

- SS 304
- HEC



TURNBUCKLE OPEN BODY HOOK + EYE
HTB16HE

- SS 316
- HEC



HATCH HINGE UNEVEN
HHH16U

- SS 316
- HEC



E-TYPE CIRCLIP

- Metric
- SS 1.4122



WIRE ROPE 305M
HRW16

- SS 316
- HEC



EXTERNAL CIRCLIP

- Metric
- SS 1.4122



INTERNAL CIRCLIP

- Metric
- SS 1.4122

