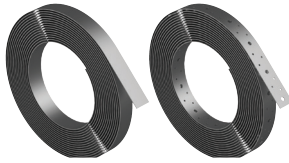


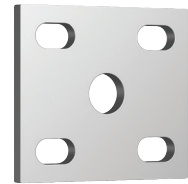
**GALVANISED BRACING STRAP 0.8 X 30MM**  
GSBMG08

- Z275
- AS1684
- Punched and Unpunched



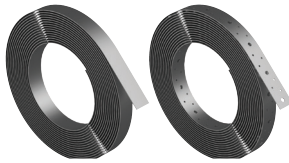
**FISH PLATE FOR 40-50mm AXLE**  
HPFGS

- Hot Dip Galvanised
- Mild Steel



**GALVANISED BRACING STRAP 1.0 X 30MM**  
GSBMG10

- Z275
- AS1684
- Punched and Unpunched



**ANCHOR HOOKS**

- Metric
- SS 316



**BRACING STRAP TENSIONER**  
GSTMGFW30

- Z275
- Wing nut assembly
- Used to tension bracing strap



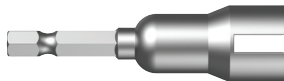
**U SHAPE WITH BAR POST SUPPORT**  
GUPSB

- SS 316
- HEC



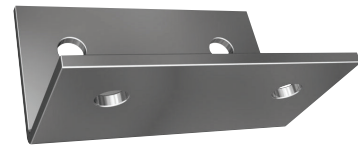
**WING NUT TENSIONER**  
TXDDPWN25

- Alloy Steel
- 1/4" Drive Bit
- Use with GSTMGFW30 Tensioner



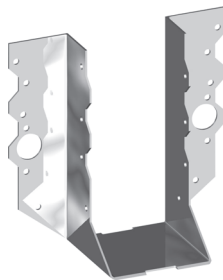
**TIMBER ANGLE CONNECTOR M12**  
GACGT12

- Hot Dip Galvanised
- HEC
- Mild Steel



**JOIST HANGER**  
HHJ16D

- SS 316
- HEC



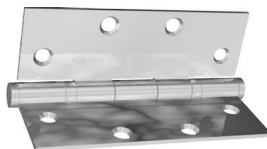
**ANGLE BRACKET M16 / 2 HOLES**  
GABGSS16

- Hot Dip Galvanised
- HEC
- Mild Steel



**BUTT HINGE 8 HOLE**  
FIXED PIN  
HHB04D-100

- SS 304
- HEC



**TURNBUCKLE OPEN BODY HOOK + EYE**  
HTB16HE

- SS 316
- HEC



**HATCH HINGE UNEVEN**  
HHH16U

- SS 316
- HEC



**E-TYPE CIRCLIP**

- Metric
- SS 1.4122



**WIRE ROPE 305M**  
HRW16

- SS 316
- HEC



**EXTERNAL CIRCLIP**

- Metric
- SS 1.4122



**INTERNAL CIRCLIP**

- Metric
- SS 1.4122

