

**3" MINI ORBITAL SANDER**  
SI3102



**SHINANO**

- Ultra compact
- Free Speed: 12,000 RPM
- Output: 153 Watts
- Orbit Dia.: 3 mm
- Weight: 0.54 Kg

**4" ANGLE GRINDER**  
SI2500L

- Reliable, High quality motor
- Speed governed for optimal RPM
- Spindle Size: M10 x 1.5
- Free Speed: 12,700 RPM
- Output: 443 Watts
- Weight: 1.82 Kg

**SHINANO**



**6" DUAL ACTION PALM GRIP SANDER**  
SI3101-6



**SHINANO**

- Free Speed: 10,000 RPM
- Output: 148 Watts
- Orbit Dia.: 5 mm
- Weight: 0.94 Kg

**5" ANGLE GRINDER**  
SI2515LA

- Speed governed for optimal disc RPM
- Spindle lock
- Spindle Size: M14 x 2
- Free Speed: 12,000 RPM
- Length: 230 mm
- Output: 570 Watts

**SHINANO**



**MINI ORBITAL PALM GRIP PAD SANDER**  
SI3003A



**SHINANO**

- Free Speed: 9,000 RPM
- Pad Size: 100 x 75 mm
- Orbit Dia.: 4 mm
- Weight: 0.94 Kg

**5" ANGLE GRINDER**  
SI2520L

- Spindle Lock
- Adjustable quick lock guard
- Governed for optimal disc RPM
- Spindle Size: M14x2
- Free Speed: 12,000 RPM
- Out Put: 610 Watts
- Weight: 1.85 kg

**SHINANO**



**6" DUAL ACTION DUST FREE PALM GRIP SANDER**  
SI3111-6



**SHINANO**

- Self generating vacuum dust system
- Free Speed: 10,000 RPM
- Output: 148 Watts
- Orbit Dia.: 5 mm
- Weight: 1.29 Kg

**7" ANGLE GRINDER**  
SI2600L

- Spline disc receiver & nut
- Speed governed for optimal disc RPM
- Free Speed: 7,500 RPM
- Output: 754 Watts
- Length: 337 mm
- Weight: 3.24 Kg

**SHINANO**



**1/4" ANGLE HEAD DIE GRINDER**  
SI2005HD

- Free Speed: 20,000 RPM
- Output: 200 Watts
- Length: 162 mm
- Weight: 0.56 Kg



**SHINANO**

- Compact, lightweight Polymer body cover
- Built-in air regulator

**1/4" MEDIUM DIE GRINDER**  
SI2011S

- Free Speed: 25,000 RPM
- Output: 422 Watts
- Length: 170 mm
- Weight: 0.60 Kg



**SHINANO**

**1/4" HIGH TORQUE DIE GRINDER**  
SI2015A

- Free Speed: 5,500 RPM
- Output: 457 Watts
- Length: 217 mm
- Weight: 0.60 Kg



**SHINANO**

- Planetary geared die grinder for low speed and high torque
- Compact, lightweight, ergonomic polymer body

**1/4" SMALL DIE GRINDER**  
SI2002EX

- Free Speed: 27,000 RPM
- Output: 219 Watts
- Length: 151 mm
- Weight: 0.37 Kg



**SHINANO**

- Compact, lightweight Polymer body cover
- Built-in air regulator

**1/4" EXTENDED DIE GRINDER**  
SI2022S

- Free Speed: 24,000 RPM
- Output: 537 Watts
- Length: 326 mm
- Weight: 1.34 Kg



**SHINANO**

**1/4" MEDIUM DIE GRINDER**  
SI2012EX

- Free Speed: 25,000 RPM
- Output: 388 Watts
- Length: 170 mm
- Weight: 0.60 Kg



**SHINANO**

- Compact, lightweight Polymer body cover
- Built-in air regulator

## MYTON 2.5" (58MM) DISC GRINDER MYG-25



- Deadman safety lever
- Newly designed Green disc allows grinding of Iron and Stainless Steel
- Air Consumption: 14.8cfm
- Speed: 19,000rpm
- Inlet thread size: 1/4"
- Weight: 0.6kg



## MYTON 4" (100MM) DISC GRINDER MYG-40



- Deadman safety lever
- Silenced
- Air Consumption: 17.7cfm
- Speed: 13,000rpm
- Inlet thread size: 3/8"
- Weight: 1.5kg



## MYTON 4" (100MM) DISC GRINDER MG-40



- Ring switch type
- New design exhaust system
- Air Consumption: 0.50cfm
- Speed: 13,000rpm
- Inlet thread size: 1/4"
- Weight: 1.4kg



## MYTON 5" (125MM) DISC GRINDER MYG-50



- Deadman safety lever
- Long life motor vanes reduce tool downtime
- Lock Spindle for quick disc change
- Air Consumption: 26.5fm
- Speed: 11,000rpm
- Inlet thread size: 3/8"
- Weight: 2.2kg



## MYTON 7" (180MM) DISC GRINDER MYG-70



- Deadman safety lever
- Advanced Governor and Disc Lock system
- Air Consumption: 24.7cfm
- Speed: 7,600rpm
- Inlet thread size: 3/8"
- Weight: 2.45kg

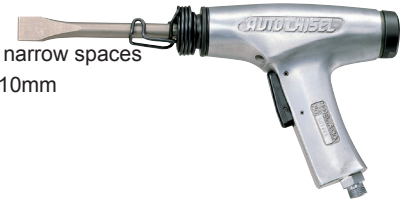


Threaded Adaptors Available

## AUTO CHISEL A-300



- Durable and powerful
- Enables hammering work in narrow spaces
- Chisel Chuck / Shank Size: 10mm
- Air Consumption: 10.5cfm
- Stroke Speed: 2,600bpm
- Inlet thread size: 1/4"
- Weight: 1.7kg



Chisel not included, for illustration purposes only

## AIR CHIPPING HAMMER CH-24



- Chisel lock retains chisel securely
- High strength piston allows trouble-free operation
- Chisel Chuck / Shank Size: 12.7mm sq.
- Air Consumption: 7.0cfm
- Stroke Speed: 4,000bpm
- Inlet thread size: 3/8"
- Weight: 1.7kg



## SUPER KELEN SCALER S-250



- 250mm handle for those hard to reach applications
- 38mm Bent Scraper as standard, wide range of chisels available
- Chisel Chuck / Shank Size: 12.7mm sq.
- Air Consumption: 9.5cfm
- Stroke Speed: 2,500bpm
- Inlet thread size: 3/8"
- Weight: 4.1kg



S-1000 extended 1m Model available

## MYTON PNEUMATIC DISC SANDER MYS-40



- High performance whilst lightweight
- Wheel Dia: 100mm (4")
- Bore Size: 16mm
- Air Consumption: 15.9cfm
- Speed: 13,700rpm
- Inlet thread size: 1/4"
- Weight: 1.1kg



## PALM ORBITAL 150MM (6") SANDER APS150



- Extremely low vibration
- Adjustable speed
- Speed: 10,000rpm
- Orbit Diameter: 5mm
- Air Consumption: 16.0cfm
- Inlet size: 1/4"
- Weight: 0.72kg



## HANDY 70MM PNEUMATIC SANDER FS50A



- Small, lightweight and compact to permit working easily in corners and other tight spots
- Turbine motor minimizes vibration
- Speed: 15,000rpm
- Orbit Diameter: 1.2mm
- Air Consumption: 5.0cfm
- Inlet size: 1/4"
- Weight: 0.5kg



## RECIPROCATING SUPER SAW SSW-110



- Adoption of piston rings minimized power loss and improved cutting efficiency
- Rated Air Pressure: 6kgf/cm<sup>2</sup>
- Air Consumption: 10.24cfm
- Stroke Speed: 7,000min<sup>-1</sup>
- Cutting Capacity: 3mm (Mild steel)
- Stroke: 11mm
- Weight: 0.62kg



**NEEDLE SCALER**  
JT-20



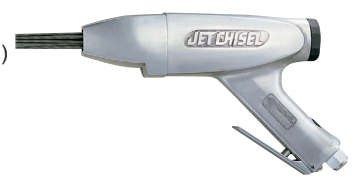
- Straight type
- Std Needles: 3mm (2mm optional)
- Air Consumption: 7.0 cfm
- Stroke Speed: 4,000 rpm
- Inlet Thread Size: 3/8"
- Weight: 2.4kg



**NEEDLE SCALER**  
JEX-24



- Pistol grip
- Std Needles: 3mm (2mm optional)
- Air Consumption: 9.5 cfm
- Stroke Speed: 4,000 rpm
- Inlet Thread Size: 3/8"
- Weight: 2.7kg



**NEEDLE SCALER**  
JEX-28



- Pistol grip
- Std Needles: 3mm & 4mm (2mm optional)
- Air Consumption: 12.5 cfm
- Stroke Speed: 4,500 rpm
- Inlet Thread Size: 3/8"
- Weight: 3.5kg



**KUKEN 'TWIN HAMMER' TYPE IMPACT WRENCH**  
KTT160V



- Square Drive: 1/2"
- Speed: 6,300rpm
- Bolt Capacity: 16mm
- Max Torque: 660Nm / 490ft/lbs
- Air Consumption: 9.2cfm
- Noise Level: 78dB(A)
- Vibration Level: 2.9m/s<sup>2</sup>
- Weight: 1.5kg



**KUKEN 'N' TYPE IMPACT WRENCH**  
KT2500P pro



*Low noise & vibration levels*

- Square Drive: 3/4"
- Speed: 4,500rpm
- Bolt Capacity: 25mm
- Max Torque: 1150Nm / 850ft/lbs
- Air Consumption: 16.0cfm
- Noise Level: 85dB(A)
- Vibration Level: 3.9m/s<sup>2</sup>
- Weight: 4.2kg



**KUKEN 'N' TYPE IMPACT WRENCH**  
KT3800PRO XG



- Square Drive: 1"
- Speed: 4,500rpm
- Bolt Capacity: 38mm
- Max Torque: 1800Nm / 1330ft/lbs
- Air Consumption: 22.2cfm
- Noise Level: 89dB(A)
- Vibration Level: 6.2m/s<sup>2</sup>
- Weight: 7kg



**KUKEN 'N' TYPE IMPACT WRENCH**  
KT4500G



*Low noise & vibration levels*

- Square Drive: 1"
- Speed: 3,700rpm
- Bolt Capacity: 45mm
- Max Torque: 2750Nm / 2040ft/lbs
- Air Consumption: 26.5cfm
- Noise Level: 98dB(A)
- Vibration Level: 6.0m/s<sup>2</sup>
- Weight: 10.7kg



**KUKEN 'N' TYPE IMPACT WRENCH**  
KT5000G



*Low noise & vibration levels*

- Square Drive: 1 1/2"
- Speed: 3,000rpm
- Bolt Capacity: 50mm
- Max Torque: 3500Nm / 2590ft/lbs
- Air Consumption: 28.9cfm
- Noise Level: 99dB(A)
- Vibration Level: 8.5m/s<sup>2</sup>
- Weight: 16kg



**KUKEN TWIN HAMMER TYPE IMPACT WRENCH**  
KT19HP



- Square Drive: 1/2"
- Speed: 7,400rpm
- Bolt Capacity: 18mm
- Max Torque: 480Nm / 360ft/lbs
- Air Consumption: 13.8cfm
- Noise Level: 90dB(A)
- Vibration Level: 5.8m/s<sup>2</sup>
- Weight: 2.5kg



**KUKEN HAMMER TYPE IMPACT WRENCH**  
KT20P



- Square Drive: 3/4"
- Speed: 4,500rpm
- Bolt Capacity: 20mm
- Max Torque: 870Nm / 640ft/lbs
- Air Consumption: 16.6cfm
- Noise Level: 93dB(A)
- Vibration Level: 5.6m/s<sup>2</sup>
- Weight: 4.2kg



**KUKEN HAMMER TYPE IMPACT WRENCH**  
KT20PI



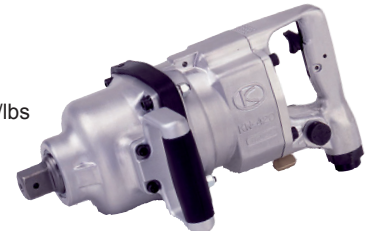
- Square Drive: 3/4"
- Speed: 3,800rpm
- Bolt Capacity: 22mm
- Max Torque: 870Nm / 640ft/lbs
- Air Consumption: 21.2cfm
- Noise Level: 97dB(A)
- Vibration Level: 14.9m/s<sup>2</sup>
- Weight: 6.2kg



**KUKEN HAMMER TYPE IMPACT WRENCH**  
KT420G



- Square Drive: 1"
- Speed: 3,000rpm
- Bolt Capacity: 42mm
- Max Torque: 2350Nm / 1740ft/lbs
- Air Consumption: 28.9cfm
- Noise Level: 100.5dB(A)
- Vibration Level: 10.2m/s<sup>2</sup>
- Weight: 13.1kg



## 1/2" COMPACT IMPACT WRENCH SI1455SR



Max Torque: 550 Ft/lbs  
Free Speed: 9,000 RPM  
Bolt Cap: 16 mm  
Weight: 1.17 Kg

## SHINANO

- 3 Position forward torque selector dial located beneath trigger
- Full-time maximum torque in reverse
- Forward/Reverse toggle switch integrated into handle
- Feather touch trigger
- Responsive 8 vane motor
- Jumbo single Hammer

## 1/2" IMPACT WRENCH SI1490B



Max Torque: 627 Ft/lbs  
Free Speed: 8,500 RPM  
Bolt Cap: 20 mm  
Weight: 1.9 Kg

## SHINANO

- Responsive 8 vane motor
- Forward/Reverse selector
- 4 position speed selector
- Feather touch trigger
- Twin Hammer

## 3/4" IMPACT WRENCH SI1550



Max Torque: 1,217 Ft/lbs  
Bolt Cap: 24 mm  
Length: 218 mm  
Weight: 3.25 Kg

## SHINANO

- Twin Hammer
- Feather touch trigger
- Forward/Reverse selector
- 4 position speed selector

## 1" HEAVY DUTY IMPACT WRENCH SI1860



Max Torque: 1,840 Ft/lbs  
Bolt Cap: 41 mm  
Length: 285 mm  
Weight: 10.9 Kg

## SHINANO

- Pinless Hammer
- Heavy Duty protective rubber guards
- 3 D-handle locations
- Also available with 6" anvil (SI1866) or 8" anvil (SI1868)

## 1" HEAVY-DUTY D-HANDLE IMPACT WRENCH SI1870

- Pinless Hammer
- Heavy Duty protective rubber guards
- 3 D-handle locations

Max Torque: 1,770 Ft/lbs  
Bolt Cap: 41 mm  
Length: 350 mm  
Weight: 10.6 Kg

## SHINANO

- Also available with 6" anvil (SI1876) or 8" anvil (SI1878)



## 1" H-DUTY IMPACT WRENCH SI1880

- Pinless Hammer
- Forward/Reverse switch with 3 power levels in forward and reverse

Max Torque: 2,430 Ft/lbs  
Bolt Cap: 38 mm  
Length: 420 mm  
Weight: 15.4 Kg

## SHINANO

- 3 D-handle locations
- Heavy Duty rubber guards
- Also available with 8" anvil (SI1888)



## SUPER MINI RATCHET WRENCHES

Max Torque: 22 Ft/lbs  
Length: 125 mm  
Weight: 0.39 Kg



## SHINANO

Product Code	Anvil
SI1107B	1/4"
SI1108B	3/8"

## EX SERIES RATCHET WRENCHES

- Polymer body skin
- 360° air inlet swivel
- Inbuilt regulator



## SHINANO

Product Code	Anvil
SI1340EX	3/8"
SI1345EX	1/2"

Max Torque: 81 Ft/lbs  
Length: 265 mm  
Weight: 1.15 Kg

## MINI RATCHET WRENCHES

Max Torque: 26 Ft/lbs  
Length: 168 mm  
Weight: 0.51 Kg



## SHINANO

Product Code	Anvil
SI1200B	1/4"
SI1205B	3/8"

## 3/8" THROUGH RATCHET SI1288S



## SHINANO

Includes 8, 10, 11, 12, 13 & 14 mm sockets, 3/8" sq. drive.  
Max Torque: 33 Ft/lbs  
Length: 211 mm  
Weight: 0.54 Kg

## MINI EX SERIES RATCHET WRENCH

Max Torque: 31 Ft/lbs  
Length: 168 mm  
Weight: 0.54 Kg



## SHINANO

- Polymer body skin
- 360° air inlet swivel
- Inbuilt regulator

Product Code	Anvil
SI1217EX	1/4"
SI1218EX	3/8"

## 1/2" HEAVY DUTY RATCHET SI1435

Max Torque: 118 Ft/lbs  
Length: 368 mm  
Weight: 1.95 Kg

## SHINANO



**PORTABLE PNEUMATIC MINI BEVELLER**  
**CB-02**



- Bevels either inner or outer edges
- Adjust bevel dimensions with accessory gauge
- Air Consumption: 14.0 cfm
- Free Speed: 13,000rpm
- Chamfering Capacity: 0 - 2C, 2R Mild
- Chamfering Angle: 45°
- Weight: 1.8kg



**PORTABLE PNEUMATIC MINI BEVELLER**  
**AMB-0307**



- Adjust bevel dimensions with accessory gauge
- Super solid inserts with 4-sided blade
- Air Consumption: 32.0 cfm
- Free Speed: 14,000rpm
- Chamfering Capacity: 0 - 7C(Mild),  
0-3C (SUS), 2R, 3R & 4R
- Chamfering Angle: 15° - 45°
- Weight: 2.9kg



**PNEUMATIC DIE GRINDER**  
**L-25B inch / L-25B metric**



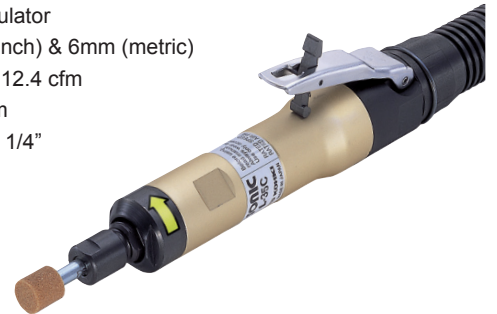
- Super efficient silenced rear exhaust system
- Deadman safety lever and in-built speed regulator
- Collet Size: 1/4" (inch) & 6mm (metric)
- Air Consumption: 14.0 cfm
- Speed: 27,000rpm
- Inlet Thread Size: 1/4"
- Weight: 0.6kg



**PNEUMATIC DIE GRINDER**  
**L-35C inch / L-35C metric**



- Super efficient silenced rear exhaust system
- Deadman safety lever & double front bearing
- In-built speed regulator
- Collet Size: 1/4" (inch) & 6mm (metric)
- Air Consumption: 12.4 cfm
- Speed: 37,500rpm
- Inlet Thread Size: 1/4"
- Weight: 0.45kg



**CSS**<sup>®</sup>

*the name behind the names.*

**CSS Members: Australian Owned &  
Independently Operated.**

**100 plus** stores nationwide.