

SAFETY - WORK PLACE AND TRAFFIC MANAGEMENT

0410 ZENEX™ THERMOPLASTIC SAFETY PADLOCKS



- Designed exclusively for Lockout/Tagout applications
- Supplied keyed different as standard, available in keyed alike or master keyed on request
- Registered key system available on request



Product Code	Description
0410	Safety Padlock 38 x 6mm Shackle Colours available in BLK, BLU, GRN, ORJ, PRP, RED, TEL, YLW
<i>Add desired colour suffix to the end of the item code.</i>	

S31 ZENEX™ S/S SHACKLE SAFETY PADLOCKS



- Compact padlock, with stainless steel shackle
- Supplied keyed different as standard, available in keyed alike or master keyed on request
- Padlocks come with cover sealing shackle and keyway from dust and dirt

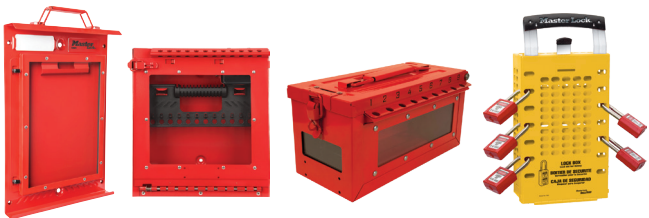


Product Code	Colour
S31	Safety Padlock 38 x 4.76mm Shackle Colours available in BLK, BLU, GRN, ORJ, PRP, RED, TEL, YLW
<i>Add desired colour suffix to the end of the item code.</i>	

GROUP LOCKOUT AND PERMIT STORAGE



- Securely manage keys, locks and permits during group lockout



Product Code	Colour
S3501	Permit control station*
S3502	Wall mount group lock box*
S601	Portable group lock box w/ window
0498A	Portable group lock box
0503YLW	Wall Mount group lock box
<i>*Also available sold together - S3500</i>	

SAFETY TAGS



- Tags are customisable with name, dept. and expected completion date.



Product Code	Colour
0497A	Laminated Do Not Operate tags, 12pk
S4801	Do Not Operate photo tags, 12pk
TAGOOS	Disposable Out of Service Tags, 25pk

CIRCUIT BREAKER LOCKOUT DEVICES



- A range of devices to effectively isolate MCBs, CBs, switches and fuses



Product Code	Description
S2394	Universal MCB lockout
S2393	Universal MCB lockout
S2392	MCB lockout pin in
S2391	MCB lockout pin out, wide
S2390	MCB lockout pin out, narrow
S3821	Circuit breaker lockout, small
S3822	Circuit breaker lockout, medium
S3823	Circuit breaker lockout, large
FL1	Fuse holder lockout

LOCKOUT HASPS



- Allows multiple workers to lock onto a single lockout point



Product Code	Colour
0416	Aluminium hasp 25mm jaw ID
0417	Aluminium hasp 38mm jaw ID
0420	Steel hasp 25mm jaw ID
0421	Steel hasp 38mm jaw ID
0428	Non conductive nylon hasp

VALVE AND CABLE LOCKOUTS



- For quick and effective lockout of ball, gate and butterfly valves



Product Code	Description
0485	Gate Valve lockout (set of 5)*
S3921	Butterfly lockout with cable
S3080	Ball valve lockout - adjustable
S3477	Ball valve lockout - steel
<i>*Also available separately</i>	

- Ideal for group and multi-point lockouts



Product Code	Description
S806	Cable lockout 1830mm
S856	Retractable steel cable lockout
S866	Retractable nylon cable lockout