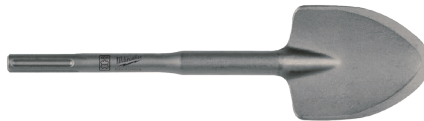


## SDS MAX CHISELS



Product Code	Description
4932478266	SDS MAX Premium SLEDGE Pointed Chisel 400mm (Replaces 4932459281)
4932478267	SDS MAX Premium Flat Chisel 400 x 25mm (Replaces 4932459282)
4932343734	SDS MAX Pointed Chisel 280mm
4932343735	SDS MAX Pointed Chisel 400mm
4932343736	SDS MAX Pointed Chisel 600mm
4932343737	SDS MAX Flat Chisel 280 x 25mm
4932343738	SDS MAX Flat Chisel 400 x 25mm
4932343739	SDS MAX Flat Chisel 600 x 25mm
4932343743	SDS MAX Wide Chisel 400 x 50mm
4932343745	SDS MAX Spade Chisel 350 x 115mm

Product Code	Description
4932343744	SDS MAX Spade Chisel 300 x 80mm
4932343740	SDS MAX Hollow Chisel 300 x 26mm
4932343746	SDS MAX Wing Chisel 380 x 35mm
4932343747	SDS MAX Clay Spade 400 x 110mm
4932343771	SDS MAX UNIVERSAL TAPER 600g
4932352918	SDS MAX Bushing Tool 240 x 50mm
4932399234	SDS MAX Angle Tile Chisel 300 x 80mm
4932399270	TAMPING PLATE 120 x 120mm P1M
4932399907	SDS MAX Point Chisel 380 x 20mm shaft
4932399908	SDS MAX Flat Chisel 380 x 30 x 20mm shaft
4932451354	SDS MAX Earth Rod Driver 13.3mm x 260mm
4932451355	SDS MAX Earth Rod Driver 16.5mm x 260mm

## SDS PLUS 4 CUT KITS



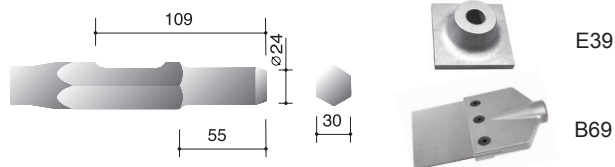
Product Code	Description
4932459279	SDS PLUS Premium Pointed Chisel 250mm
4932478262	SDS PLUS Premium SLEDGE Point Chisel
4932459280	SDS PLUS Premium Flat Chisel 250 x 20mm
4932478263	SDS Plus Premium SLEDGE Flat Chisel 250 x 20mm (Replaces 4932459280)
4932339625	SDS PLUS Pointed Chisel
4932339626	SDS PLUS Flat Chisel 250 x 20mm
4932353424	SDS PLUS Angle Chisel 250 x 40mm
4932478264	SDS Plus SLEDGE Premium Wide Chisel 250 x 40mm
4932367146	SDS PLUS Flat Wide Chisel 250 x 40mm
4932339627	SDS PLUS Hollow Chisel 250 x 22mm
4932352343	SDS PLUS Angle Tile Chisel 250 x 50mm
4932352344	SDS PLUS Angle Wide Tile Chisel 165 x 75mm
4932352919	SDS PLUS Floor Cleaning Tool Complete
4932430001	SDS PLUS Chisel Set 3 Pce

## 30MM HEX SHANK 226 SHANK TO SUIT HEAVY DUTY DEMOLITION HAMMERS



605201001

-Suits: Hitachi, Makita, Bosch and other generic hammers



Order No	Description	Length
22601375	Moil Point	375
22601450	Moil Point	450
22602375	Chisel	375
22602450	Chisel	450
22603450	Chisel 50mm Wide	450
22604410	Chisel 75mm Wide	410
22605500	Spade Clay 110mm Wide	500
22606550	Spade Pointed 135mm Wide	550
22609500	Asphalt Cutter 125mm Wide	500
22614200	Driver Spike Ø50	200
22619200	Driver Spike Ø80	200
B65	Floor Scraper	
B69	Floor Scraper - Heavy Duty	
22608400	Adaptor to Suit B65 & B69	400
E38	Tamper Plate 150 x 150mm	

-other sizes available on request

## SDS ADAPTERS



Product Code	Description
4932359490	SDS MAX – SDS PLUS Adapter
4932367166	SDS PLUS Adapter 1/2" x 20UNF-with screw
4932367438	SDS PLUS Adapter 1/2" x 20UNF-1/4" bit
4932379877	Adapter FIXTEC to SDS PLUS

## SDS MAX ADAPTER/CONNECTOR



Product Code	Description
4932399128	SDS MAX x SDS MAX Connector (Female to Female)
4932399242	SDS MAX x SDS MAX 320mm Extension Bar (Male to Male) – requires connector
4932399129	SDS MAX x SDS MAX 750mm Extension Bar (Male to Male) – requires connector
4932399243	SDS MAX x SDS MAX 1100mm Extension Bar (Male to Male) – requires connector

## CHISELS SDS PLUS / SDS MAX

### Sand-blasted Finish

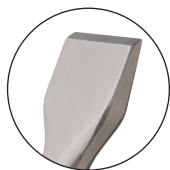
Environmentally friendly production method with zero heavy metals. Made from high tensile steel. Specially toughened steel and optimum cutter geometry ensure long life and fast, efficient work.



**Pointed (Helical)**  
Targeted chiselling and breaking work.



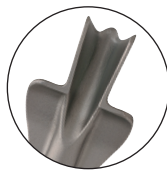
**Flat**  
For general purpose chiselling and breaking work.



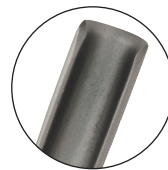
**Angle Head**  
For easy removal of tiles.



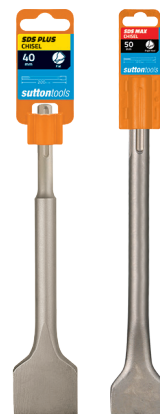
**Toothed**  
Tungsten carbide tipped for repointing, removing bricks, tiles and plaster.



**Brick Chasing**  
Ideal for cabling and plumbing applications.



**Concrete Chasing**  
For cutting narrow channels.



Type	Width mm	O/A Length mm	Item #
<b>SDS-Plus</b>			
<b>Pointed</b>	14.0	250	D660 1425
<b>Flat</b>	20.0	250	D661 2025
	40.0	200	D661 4020
<b>Angled</b>	40.0	200	D662 4020
<b>Concrete Chasing</b>	22.0	250	D663 2225
<b>SDS-Max</b>			
<b>Pointed</b>	18.0	280	D670 1828
	18.0	400	D670 1840

Type	Width mm	O/A Length mm	Item #
<b>Flat</b>	18.0	600	D670 1860
	24.0	280	D671 2428
	24.0	400	D671 2440
	24.0	600	D671 2460
	50.0	360	D671 5036
	80.0	300	D671 8030
	115.0	350	D671 1153
<b>Angled</b>	50.0	300	D672 5030
<b>Brick Chasing</b>	35.0	380	D673 3538
<b>Concrete Chasing</b>	26.0	300	D673 2625
<b>Toothed</b>	40.0	280	D674 4028

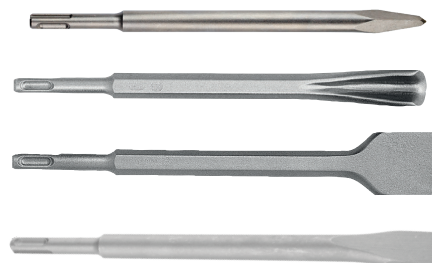
### SDS-MAX® POINTS AND CHISELS



- 'For heavy duty chiselling, channelling and demolition tasks in concrete/rebar and hard stone.
- The new XLR chisels combined with DeWALT® demolition hammers are ideal for even the toughest environments.

Cat. No.	Description	Width mm	Length mm
DT6820-QZ	Pointed Chisel	-	300
DT6821-QZ	Pointed Chisel	-	400
DT6822-QZ	Flat Chisel	25	300
DT6823-QZ	Flat Chisel	25	400
DT6824-QZ	Flat Chisel	50	360
DT6826-QZ	Hollow Chisel	26	300
DT6834-QZ	Flat Chisel	80	300
DT8091-QZ	Asphalt Cutter	90	400

### SDS-PLUS® POINTS AND CHISELS



Cat. No.	Description	Width mm	Length mm
DT6801-QZ	Pointed Chisel	-	250
DT6802-QZ	Flat Chisel	20	250
DT6803-QZ	Flat Chisel	40	250
DT6805-QZ	Hollow Chisel	22	240

### SDS PLUS EXTENSIONS



Product Code	Description
48206940	SDS Plus-Lok Extension 305mm (12")
48206945	SDS Plus-Lok Extension 457mm (18")

## DRIVER BITS – BIT HOLDERS & EXTENSIONS



SHOCKWAVE™ Impact Driver Bits are engineered to be the Most Durable, Best Fitting driver bits on the market. The Wear Guard Tip™ delivers increased wear resistance which protects the fit over the life of the bit. The Shockzone™ is optimised for each tip type and length of driver bit to absorb peak torque and prevent breaking. The Custom Alloy76™ has a customised steel and heat treatment per tip type to extend the life of the driver bits, providing up to 50X life vs. competitive impact driver bits. Shockwave™ driver bits are built to deliver extreme durability for the most demanding applications.

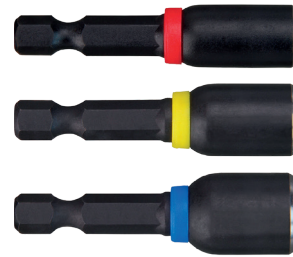
Product Code	Description
48324502	SHOCKWAVE™ Compact Magnetic Bit Holder 61mm (2-3/8")
48324503	SHOCKWAVE™ Magnetic Bit Tip Holder 75mm (3")
48324508	SHOCKWAVE™ Magnetic Drive Guide – Expandable 75mm (3")
48324531	SHOCKWAVE™ Locking Bit Holder 75mm
48324532	SHOCKWAVE™ Locking Bit Holder 150mm
48324533	SHOCKWAVE™ Locking Bit Holder 300mm
48324534	SHOCKWAVE™ Locking Bit Holder 450mm
48324511	SHOCKWAVE™ Magnetic Bit Tip Holder 150mm (6")
48324512	SHOCKWAVE™ Magnetic Bit Tip Holder 300mm (12")

## SOCKET ADAPTER POWER BIT



Product Code	Description
48325030	SHOCKWAVE™ Power Bit Socket Adapter 1/4" Hex to 1/4" Square
48325730A	SHOCKWAVE™ Power Bit Socket Adapter 1/4" Hex to 1/4" Square 10 Pce
48325031	SHOCKWAVE™ Power Bit Socket Adapter 1/4" Hex to 3/8" Square
48325731A	SHOCKWAVE™ Power Bit Socket Adapter 1/4" Hex to 3/8" Square 10 Pce
48325032	SHOCKWAVE™ Power Bit Socket Adapter 1/4" Hex to 1/2" Square
48325732A	SHOCKWAVE™ Power Bit Socket Adapter 1/4" Hex to 1/2" Square 10 Pce
48325033	SHOCKWAVE™ Power Bit Socket Adapter Set 1/4 3/8 1/2
48034405	SHOCKWAVE™ Power Bit Socket Adapter 3/8" Square to 1/4" Hex
48034410	SHOCKWAVE™ Power Bit Socket Adapter 1/2" Square to 1/4" Hex
48325100	SHOCKWAVE™ Power Bit Socket Adapter 7/16" Square to 1/2" Hex

## NUTDRIVER POWER BIT



Product Code	Description
49664502	SHOCKWAVE™ Power Bit Magnetic Nutdriver 1/4" x 50mm (2")
49664522	SHOCKWAVE™ Power Bit Magnetic Nutdriver 1/4" x 50mm (2") Pkt 3
49664503	SHOCKWAVE™ Power Bit Magnetic Nutdriver 5/16" x 50mm (2")
49664523	SHOCKWAVE™ Power Bit Magnetic Nutdriver 5/16" x 50mm (2") Pkt 3
49664505	SHOCKWAVE™ Power Bit Magnetic Nutdriver 3/8" x 50mm (2")
49664525	SHOCKWAVE™ Power Bit Magnetic Nutdriver 3/8" x 50mm (2") Pkt 3
49664506	SHOCKWAVE™ Power Bit Magnetic Nutdriver 7/16" x 50mm (2")
49664532	SHOCKWAVE™ Power Bit Magnetic Nutdriver 1/4" x 65mm (2-1/2")
49664732A	SHOCKWAVE™ Power Bit Magnetic Nutdriver 1/4" x 65mm (2-1/2") 10 Pce
49664533	SHOCKWAVE™ Power Bit Magnetic Nutdriver 5/16" x 65mm (2-1/2")
49664733A	SHOCKWAVE™ Power Bit Magnetic Nutdriver 5/16" x 65mm (2-1/2") 10 Pce
49664535	SHOCKWAVE™ Power Bit Magnetic Nutdriver 3/8" x 65mm (2-1/2")
49664735A	SHOCKWAVE™ Power Bit Magnetic Nutdriver 3/8" x 65mm (2-1/2") 10 Pce
49664536	SHOCKWAVE™ Power Bit Magnetic Nutdriver 7/16" x 65mm (2-1/2")
49664736A	SHOCKWAVE™ Power Bit Magnetic Nutdriver 7/16" x 65mm (2-1/2") 10 Pce
49664561	SHOCKWAVE™ Magnetic 50mm Nutdriver 3 Pce 1/4", 5/16", 3/8"
49664562	SHOCKWAVE™ Magnetic 50mm Nut Driver 4 Pce 1/4", 5/16", 3/8", 7/16"
49664564	SHOCKWAVE™ Magnetic 65mm Nut Driver 3 Pce 1/4", 5/16", 3/8"

## RIGHT ANGLE ATTACHMENT



Product Code	Description
49228510	Right Angle Attachment – Offset Driver Adapter – WB2