

## BEAVER SHACKLE BOW GRADE S GALV

- Complies to AS2741



Product Code	Size (mm)	WLL (t)
242305	5 x 6	0.33
242306	6 x 8	0.5
242308	8 x 10	0.75
242310	10 x 11	1
242311	11 x 13	1.5
242313	13 x 16	2
242316	16 x 19	3.2
242319	19 x 22	4.7
242322	22 x 25	6.5
242325	25 x 29	8.5



## BEAVER SHACKLE BOW GRADE S

- Alloy grade S shackles
- Colour Coded painted finish
- Suitable for mining, resource, and construction applications



- Complies to AS2741

Product Code	Size (mm)	WLL (t)	Colour
242310M	10 x 11	1	Violet
242313M	13 x 16	2	Green
242316M	16 x 19	3.2	Yellow
242319M	19 x 22	4.7	Grey
242322M	22 x 25	6.5	Brown
242325M	5 x 29	8.5	Blue

## GRADE S SHACKLE BOW TYPE, SCREW PIN



- Proof tested to 2 x working load limit
- With a minimum break force of 6 x WLL

Code	Size	WLL
503006	6mm	0.5T
503013	13mm	2.0T



## GRADE S SHACKLE DEE TYPE, SCREW PIN



- Proof tested to 2 x working load limit
- With a minimum break force of 6 x WLL

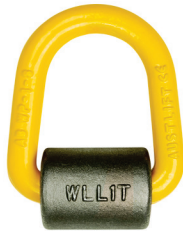
Code	Size	WLL
504011	11mm	1.5T
504013	13mm	2.0T



## GRADE 80 WELD ON LIFTING POINT 1T - 8T



Code	WLL
104001	1T
104003	3T



## BEAVER SAFETY CARGO NET NETSYS



- Sizes: S (2.46m X 2.46m), M (2.8m x 2.84m), L (2.8m X 3.44m)
- Multiple webbing loops and eyelets
- 4x Tie Ropes and 4x Cam Buckles
- UV stabilised and tightly woven mesh
- Integrated D rings to assist holding down
- For trailers, utes, boats, 4WD's and trucks
- Convenient heavy duty storage bag



## BEAVER WELD-ON RING BALPVO



- Sizes: 1.5, 2.5t, 4t, 6.7t
- Extremely high strength attachment as a lifting and lashing point
- Easily welded into required position with the aid of height lugs on the weld block
- Functional compact design
- Lifting ring has durable powder coated baked enamel finish



## PUNCTURE PROOF WHEEL 390MM



- Puncture proof wheel 390mm
- Axle diameter – 25mm
- Common bearing
- 150kg capacity
- Great to use on building sites
- Available in two widths – 90mm and 130mm



Code	Description
28905	Standard - 390mm x 90mm
28906	Extra Wide - 390mm x 130mm

## PNEUMATIC WHEEL 28904



- 390mm x 130mm
- Axle diameter – 25mm
- Common bearing
- 150kg capacity.





*the name behind the names.*

**CSS Members: Australian Owned & Independently Operated.**

**100 plus stores nationwide.**

## PUNCTURE PROOF WHEELS



Eliminates flat tyres and the need to replace tubes. Suited to hand trucks, nursery equipment, industrial and agricultural equipment. Features the durability of a solid rubber wheel with the cushioned ride of a pneumatic.



- 215mm - 400mm diameter
- 100kg - 200kg load capacity



## PLASTIC CENTRED PNEUMATIC WHEELS



Featuring a corrosion and rust resistant plastic rim making them ideal for applications in wet or damp environments; such as nursery trolleys, hand trucks and agricultural equipment.



- 215mm - 400mm diameter
- 100kg - 200kg load capacity

Wheel Diameter	Load Capacity	Wheel Code
215mm	100kg	PN8864
215mm	100kg	PN8865
265mm	100kg	PN1074
265mm	100kg	PN1075
400mm	200kg	PN1608
400mm	200kg	PN1627
420mm	200kg	PN1610

## STEEL CENTRED PNEUMATIC WHEELS



These steel centred pneumatic wheels are ideal for use in the garden, industrial or agricultural equipment as well as concrete mixers.



- 210mm - 400mm diameter
- 100kg - 300kg load capacity

Wheel Diameter	Load Capacity	Wheel Code
210mm	100kg	PN8860
260mm	180kg	PN1066
280mm	150kg	PN1100
320mm	180kg	PN1271
320mm	200kg	PN1272
400mm	200kg	PN1608
400mm	300kg	PN1616

## OFFSET WHEELS



Suitable for most hand trolleys requiring offset hubs, these puncture proof or pneumatic wheels are fitted with 3-piece zinc plated rims and rubber sealed precision bearings to provide a longer life, reduced downtime and increased performance.



- 210mm to 260mm diameter
- 100kg - 180kg load capacity

## RUBBER TYRED NYLON CENTRED WHEELS



An excellent low-cost, lightweight and durable solution for outdoor use. Non-marking with plastic centres. Water resistance makes these wheels ideal for any wash down equipment and prolonged outdoor use.



- 95mm - 295mm diameter
- 10kg - 50kg load capacity

Wheel Diameter	Load Capacity	Wheel Code
90mm	10kg	RN4068-08
107mm	12kg	RN4069-10
130mm	15kg	RN5041-10
150mm	50/35kg	RN6661-50
200mm	50/35kg	RN8874-50
245mm	50kg	RN1024-20PL

## POLYURETHANE TYRED WHEELS



Hard wearing, long lasting and non-marking. Designed for high load carrying capabilities. Ideally suited to intermittent usage.



Nylon Centred, Cast Iron Centred, and Rebound Polyurethane, and Donut Profile wheels available.

- 75mm - 400mm diameter
- 80kg - 5000kg load capacity

## DRIVE WHEELS



Richmond's Drive Wheels are polyurethane tyred on a cast iron centre. Can be supplied with keyways. Ideally suited for applications where intermittent usage is required.

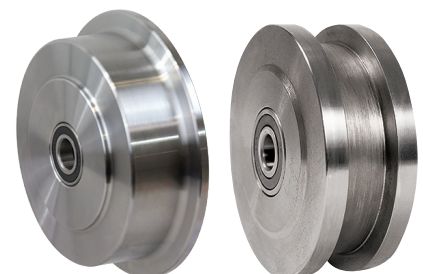


- 150mm - 450mm diameter
- 200kg - 5000kg load capacity.

## TRACK WHEELS



Richmond can supply a wide range of track wheels including Single Flange, Double Flange, Beam Trolley, V-groove, Rope groove, C-Groove and Gate Track.



Contact us to discuss your specific needs.

## UTILITY SERIES CASTORS

Ideal for light duty applications. Features a corrosion resistant zinc plated finish, and is available with nylon or grey rubber wheels. Round or square pintle fittings available to suit bolt mounted models.



Wheel Diameter	Wheel Type	Load Capacity	Rigid Code	Swivel Code	Swivel/ Brake Code
50mm	Nylon	30kg	R2709	S2708	S2708B
50mm	Inst Rubber	30kg	R2711	S2710	S2710B
75mm	Nylon	50kg	R3709	S3708	S3708B
75mm	Inst Rubber	50kg	R3711	S3710	S3710B
100mm	Nylon	70kg	R4717	S4716	S4716B
100mm	Inst Rubber	70kg	R4711	S4710	S4710B

## LIGHT INDUSTRIAL SERIES

Ideal for use on mobile equipment in hospitals, nurseries, shops and general industry. Features a robust twin race swivel. An economical hard wearing reliable castor with a variety of wheel materials available to cater for different surfaces.



Wheel Diameter	Wheel Type	Load Capacity	Rigid Code	Swivel Code	Swivel/ Brake Code
75mm	Nylon	100kg	R3305	S3304	S3304B
75mm	Polyurethane	80kg	R3311	S3310	S3310B
75mm	Reb Rubber	80kg	R3351	S3350	S3350B
100mm	Nylon	100kg	R4407	S4406	S4406B
100mm	Polyurethane	100kg	R4405	S4404	S4404B
100mm	Reb Rubber	100kg	R4423	S4422	S4422B

## 200 SERIES CASTORS

Available with Nylon, Poly on Nylon, or Rebound Rubber wheels – Richmond's 200 Series castors feature load capacities of up to 200kgs these castors offer the next level of castor to our popular Light Industrial Series and are perfect for all manner of light to medium duty applications.



## 300 SERIES CASTORS

Sturdy pressed metal castor with a variety of wheel fittings available to suit surface conditions, and a higher load bearing capacity.

- 100mm to 200mm diameter
- 150kg to 300kg load capacity
- High temperature wheel types available



Wheel Diameter	Wheel Type	Load Capacity	Rigid Code	Swivel Code	Swivel/ Brake Code
100mm	Nylon	200kg	R4033	S4032	S4032B
100mm	Reb Rubber	150kg	R4043	S4042	S4042B
100mm	Polyurethane	200kg	R4045	S4044	S4044

## HEAVY INDUSTRIAL SERIES

Zinc plated to provide corrosion resistance, includes grease nipple to help maintain smooth operation, additional strength and flex resistance. Ideal for logistics, manufacturing and road transport.

- 100mm - 200mm diameter
- 110kg - 500kg load capacity



## 500 SERIES CASTORS

Designed for Heavy Duty applications, these castors feature a sealed precision machined ball race and high tensile kingpin to withstand high impact side loads.

- 100mm - 250mm diameter
- 110kg to 500kg load capacity
- Rigid, Swivel, and Swivel/ Brake models available



## 1000 SERIES CASTORS

An economical alternative to heavier load bearing castors. Features enhanced manoeuvrability with decreased rolling resistance, precision machined ball race with high tensile kingpin.

- 150mm - 300mm diameter
- 900kg - 1000kg load capacity
- Rigid, Swivel, and Swivel/ Brake models available



## STAINLESS STEEL ELITE

Grade 304 stainless steel, featuring a stainless steel double ball race swivel. Ideal for medical or laboratory equipment, cool rooms and kitchens. Round and square pintles available for bolt mounted models.

- 75mm - 125mm diameter
- 80kg - 100kg load capacity



## STAINLESS STEEL EXCEL

With a heavy duty pressed stainless steel frame, this castor is the ideal choice for use in wet areas, frequent wash down applications and food and health industries, various wheel types available. Pintles/bolts are available for bolt mounted models.

- 100mm - 200mm diameter
- 140kg - 400kg load capacity

