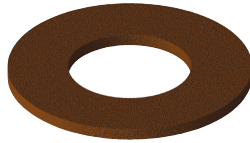


METRIC FLAT ROUND
WRRFPM

- Red Fibre
- HEC



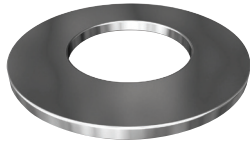
SPACER ROUND
SR66U

- Nylon Black
- UV Stable
- HEC



METRIC FLAT ROUND
WRMSZM

- Zinc Plated
- HEC
- Mild Steel



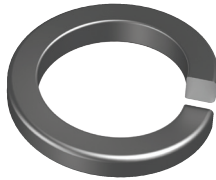
METRIC HUBO™ WASHER
WR66PHM

- Natural Nylon
- Locking and Sealing



METRIC SPRING SQUARE SECTION
WRMSZSQM

- Zinc Plated
- HEC 7980
- Mild Steel



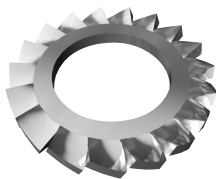
METRIC WASHER
WR66UM

- Nylon Black
- UV Stable
- HEC



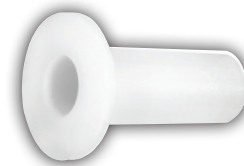
LOCK EXT SERR TOOTH
WLO4SEM

- SS 304
- DIN 6798
- Type A



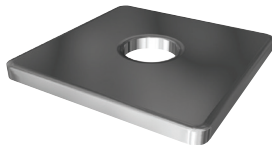
BUSHING WASHER
WB66PSM

- Natural Nylon
- HEC



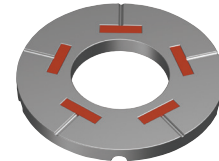
METRIC SQUARE
WSMSGM

- Hot Dip Galvanised
- HEC
- Mild Steel



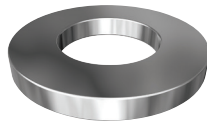
METRIC SQUIRTER® DTI WASHER
WDSTGM

- Mechanical Galvanised
- ASTM F959M
- Class 8.8



METRIC FLAT ROUND SAMPSON™
WR43ZM

- Zinc Plated
- ASTM F436M
- 38-45 HRC



SQUARE WASHER

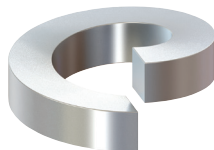


Square washers are used with bolts & nuts, screws where load spreading is advisable.



FISHBOLT SPRING WASHER
DWRHTPSM

- Plain
- AS 1085.7



HEAVY DUTY FLAT WASHER

Steel Flat washers are used with bolts and nuts.



MEASURE	FINISH	HOLE DIAM.
Metric	Zinc Plated	M10-M16
	Galvanised	M10-M20
	Black	M10-M16

MEASURE	FINISH	I.D & O.D
Metric	Zinc Plated	I.D: 6-12mm O.D: 16-28mm
	Galvanised	I.D: 6-24mm O.D: 16-48mm
	304 Stainless Steel	I.D: 6-12mm O.D: 12.5-24mm
	316 Stainless Steel	I.D: 6-20mm O.D: 12.5-36mm

FLAT ROUND WASHER DIN 125A

- Metric
- SS 304, SS 316



FLAT ROUND WASHER SMALL OD

- Metric, Imperial
- SS 304



SPRING WASHER

- Metric, UNC
- SS 304, SS 316



BELLEVILLE WASHER

- Metric
- SS 304



CURVED WASHER

- Metric
- SS 304



TOOTH LOCK WASHER INTERNAL

- Metric
- SS 304, SS 316



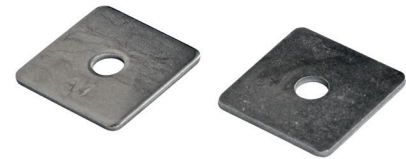
FLAT ROUND WASHER

- Metric, Imperial
- SS 304, SS 316



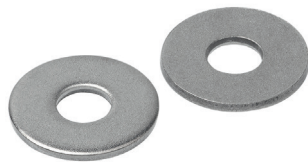
FLAT SQUARE WASHER

- Metric
- SS 316



FLAT ROUND WASHER MUDGUARD

- Metric, Imperial
- SS 304, SS 316



CRINKLE WASHER

- Metric
- SS 304



CUP WASHER

- Metric
- SS 304



TOOTH LOCK WASHER EXTERNAL

- Metric, UNC
- SS 304, SS 316



WAVE WASHER

- Metric
- SS 304



CUP WASHER WR04C

- SS 304
- HEC



NORD-LOCK®
Bolt securing systems

Anti-vibration solution. Wedge-locking action meeting DIN25201 using tension not friction.

Zinc Plate coated (Delta Protokt®) and stainless steel. Large OD available.

Laser traceability on all product.

NORD-LOCK® METRIC LARGE OD WASHER
WNHTLDM



- Delta Protokt®
- Hardened Steel
- EN 1.7182

NORD-LOCK® METRIC X SERIES WASHER
WNXTDDM



- Delta Protokt®
- Hardened Steel
- EN 1.7225

NORD-LOCK® METRIC WHEEL NUT
NL10DNM



- Delta Protokt®
- Class 10



NORD-LOCK® METRIC STANDARD WASHER
WN16DPM



- SS 316L
- AISI 316L
- EN 1.4404

NORD-LOCK® METRIC STANDARD WASHER
WNHTDDM



- Delta Protokt®
- Hardened Steel
- EN 1.7182

NORD-LOCK® METRIC LARGE OD WASHER
WN16LPM



- SS 316L
- AISI 316L
- EN 1.4404

NORD-LOCK® STANDARD WASHER KIT
WNXAHT



- Delta Protokt®
- Hardened Steel
- EN 1.7182

SCHNORR®
DISC SPRING ENGINEERING

SCHNORR® is an international leader in the engineering and manufacturing of safety washers and disc springs for the automotive, aerospace and machine construction industries.

SCHNORR® DISC SPRING
WO04DP



- SS 304
- DIN 2093

SCHNORR® TYPE VS SAFETY WASHER
WOHTVZM



- Zinc Plated
- Serrated

SCHNORR® TYPE VS SAFETY WASHER
WO04VPM



- SS 304
- Serrated



SCHNORR® DISC SPRING
WOHTDP



- Plain
- DIN 2093

SCHNORR® TYPE VS SAFETY WASHER
WOHTVPM



- Plain
- Serrated

SCHNORR® HDS LOAD HEAVY DUTY WASHER
WOHTHZM



- Zinc Plated
- DIN 6796

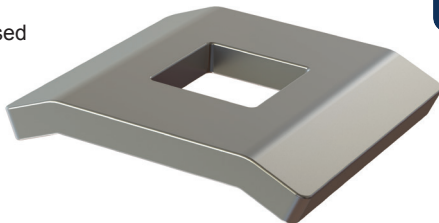
SCHNORR® HS LOAD HIGH STRESS WASHER
WOHTLZM



- Zinc Plated
- DIN 267

METRIC SECURITY MESH CLIP
HWCMSGM

- Hot Dip Galvanised
- HEC
- Mild Steel



WASHERS ASSORTMENT KIT
FEFK007

- Includes: Flat Round / Mudguard / Spring / Hardened
- Zinc Plated
- HEC
- 6.06kg
- 1770 pieces



BUMAX® METRIC MUDGUARD WASHER
WRB8MM

- Bumax®88
- ISO 7093

