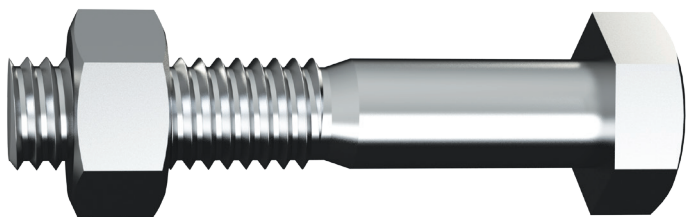


STAINLESS STEEL BOLTS & NUTS



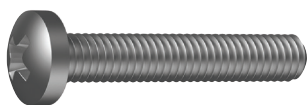
A comprehensive range of Stainless Steel Grade 316 and Stainless Steel Grade 304 fasteners are readily available for all fastening applications that are exposed to highly corrosive environments. Metric, UNC & BSW Bolts, Set Screws, Threaded Rod and Socket Screws are readily available. Also Self Tapping & Metal Thread Screws, Nuts, Acorn Nuts, & Nyloc nuts.

Also available in zinc & galvanised finishes.

METRIC PAN HEAD PHILLIPS

MS04PPM

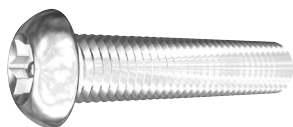
- Machine Screw
- SS 304
- DIN 7985 (H)



METRIC SOCKET BUTTON POST TORX

IMS04BTM

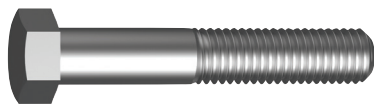
- SS 304
- HEC



METRIC HEX BOLT

BH16PCM

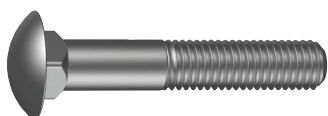
- SS 316
- DIN 931



METRIC CUP HEAD SQUARE

BC16PCM

- SS 316
- DIN 603



HEXAGON HEAD BOLTS

- Metric, UNC
- SS 304, SS 316



HEXAGON HEAD SCREWS

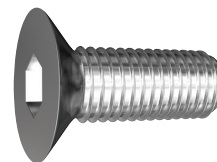
- Metric, BSW, UNC
- SS 304, SS 316



METRIC CSK FLAT SOCKET

SC04PCM

- SS 304
- DIN 7991



CUP HEAD SQUARE NECK BOLTS

- Metric
- SS 316



SOCKET CAP SCREW HEX

- Metric, UNC
- SS 304, SS 316



SOCKET CAP SCREW CSK

- Metric, UNC
- SS 304, SS 316



SOCKET SET SCREW GRUB

- Metric
- SS 304, SS 316



ALLTHREAD RODS

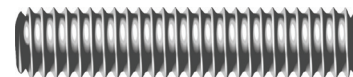
- Metric, Metric Fine, BSW, UNC
- SS 304, SS 316



METRIC ALLTHREAD 1M & 3M

AL16PCM

- SS 316
- DIN 975



BOLTS & NUTS

MACSIM®

Bolts and Nuts can be used in a wide variety of building and industrial applications where joining of materials is required. Manufactured to Australian Standards.

| HEAD | THREAD | FINISH | DIAM. |
|------|----------|---------------------------------|-----------|
| Hex | Imperial | Zinc Plated | 1/4"-3/4" |
| | | Metric | 6-12mm |
| | Metric | Galvanised | 6-24mm |
| | | 316 Stainless Steel (Bolt Only) | 6-20mm |
| Cup | Imperial | Zinc Plated | 1/4"-1/2" |
| | Metric | Galvanised | 6-16mm |



SECURITY METAL THREAD POST TORX

- Metric
- SS 304



SECURITY SELF TAPPING POST TORX BUTTON CSK

- Imperial
- SS 304



SOCKET CAP SCREW BUTTON

- Metric, UNC
- SS 304, SS 316



METAL THREAD SCREW PAN SLOT

- Metric
- SS 316



METAL THREAD SCREW CSK SLOT

- Metric
- SS 316



METAL THREAD SCREW PAN PHILLIPS

- Metric, BSW
- SS 304, SS 316



METAL THREAD SCREW CSK PHILLIPS

- Metric, BSW
- SS 304, SS 316



WING SCREW

- Metric
- SS 316



METAL THREAD SCREW CHEESE HEAD SLOT

- Metric
- SS 316



Thread Check Display XXTHREADCHECK

- Wall Mount
- Imperial and Metric, Male & Female
- Size up to M12, 9/16"



STICK WAX LUBRICANT XXWSC

- Wax
- Lubricant for Bolts / Nuts
- 425g



HEX NUT

- Metric, Metric Fine, UNC, BSW
- SS 304, SS 316



HEX LOCK NUT

- Metric, UNC
- SS 304, SS 316



HEX FLANGE NUT

- Metric
- SS 304, SS 316



HEX CAP NUT

- Metric
- SS 304



HEX COUPLING NUT

- Metric
- SS 316



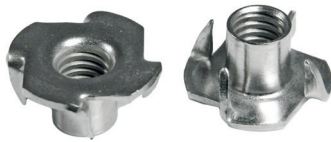
SQUARE NUT

- Metric
- SS 316



TEE NUT – 4 PRONG

- Metric, UNC
- SS 304



SHEAR NUT

- Metric
- SS 316



HEX NUTS

Hex Nuts are used with bolts to fasten multiple parts together. Also available in Hex Nylock, Hex serrated & Hex couplings.



| MEASURE | FINISH | SIZE |
|----------|---------------------|-----------|
| Imperial | Zinc Plated | 1/4"-1/2" |
| Metric | Zinc Plated | 6mm-20mm |
| | Galvanised | 6mm-24mm |
| | 304 Stainless Steel | 6mm-12mm |
| | 316 Stainless Steel | 6mm-20mm |

ULTRALOC - THREADLOCKERS

50ML 3222

The most reliable method to lock and seal threaded fasteners. From easy removal small threads under 6mm to permanent high strength over 25mm. Available in varying viscosities and strengths for virtually any application. Prevents loosening of fasteners, seals against corrosion, provides correct lubricity, controlled strengths, suitable for all fastener sizes, easy to apply.



ULTRALOC - XS SEALANTS

50ML 3565

XS range liquid thread sealants seal and secure metal pipes and fittings. Filling the space between threaded metal parts and curing to prevent leakage. Designed for low and high pressure applications. Complete sealing, locks & seals in any position, Does not block pipe system, Instant low pressure seal, Easy application and disassembly.



ULTRALOC - RETAINING

300ML 3609

Anaerobic retaining compounds fill the 'inner space' between components and cure to form a strong precision assembly. Formulated in a wide range of viscosities, gap fill flexibility and strength characteristics.

- Increased assembly and product reliability
- Fills all voids and ensures 100% contact
- Seals against corrosion • Controlled strengths



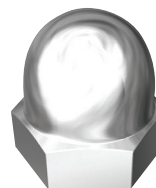
DOME NUT

- Metric, UNC
- SS 304, SS 316



METRIC HEX DOME ND04PCM

- SS 304
- DIN 1587



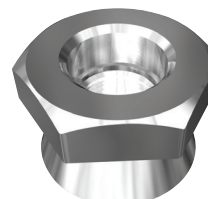
SQUARE WELD NUT

- Metric
- SS 316



METRIC SHEAR NUT NS04PCM

- SS 304
- ANSI B18.7



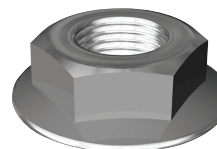
NYLON LOCK NUT

- Metric, UNC
- SS 304, SS 316



METRIC SERRATED FLANGE NUT NF04PCM

- SS 304
- ISO 4161



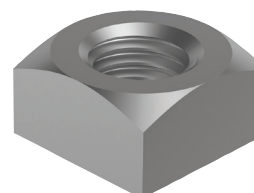
HEX INOX LOCH NUT

- Metric
- SS 304, SS 316



METRIC SQUARE NUT NQ16PCM

- SS 316
- DIN 557



HEX WELD NUT

- Metric
- SS 316



METRIC WING NUT NW16PCM

- SS 316
- ANSI B18.17



WING NUT

- Metric
- SS 304, SS 316



WING NUTS

Wing Nuts are used with bolts to fasten multiple parts together. Butterfly and spring strut nuts are also available in the nuts range.

MACSIM®

| MEASURE | FINISH | SIZE |
|----------|---------------------|------------|
| Imperial | Zinc Plated | 3/16"-1/2" |
| Metric | Zinc Plated | 5mm-12mm |
| | 316 Stainless Steel | 6mm-10mm |



FLAT ROUND WASHER DIN 125A

- Metric
- SS 304, SS 316



FLAT ROUND WASHER SMALL OD

- Metric, Imperial
- SS 304



SPRING WASHER

- Metric, UNC
- SS 304, SS 316



BELLEVILLE WASHER

- Metric
- SS 304



CURVED WASHER

- Metric
- SS 304



TOOTH LOCK WASHER INTERNAL

- Metric
- SS 304, SS 316



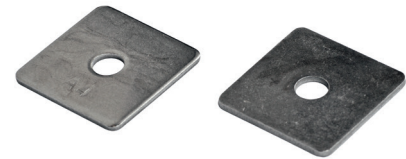
FLAT ROUND WASHER

- Metric, Imperial
- SS 304, SS 316



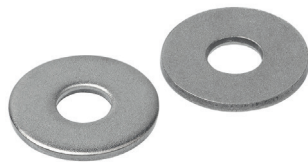
FLAT SQUARE WASHER

- Metric
- SS 316



FLAT ROUND WASHER MUDGUARD

- Metric, Imperial
- SS 304, SS 316



CRINKLE WASHER

- Metric
- SS 304



CUP WASHER

- Metric
- SS 304



TOOTH LOCK WASHER EXTERNAL

- Metric, UNC
- SS 304, SS 316



WAVE WASHER

- Metric
- SS 304



CUP WASHER WR04C

- SS 304
- HEC

