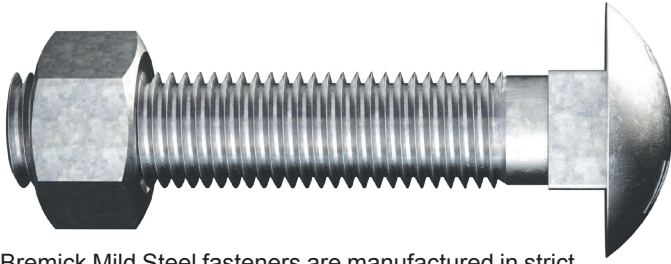


## MILD STEEL BOLTS & NUTS

**BREMICK**



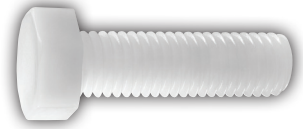
Bremick Mild Steel fasteners are manufactured in strict conformance with Australian Standards. Our range includes: Metric & BSW Bolt and Nuts, Metric & BSW Set Screws, Metric & BSW Cup Head Bolts, Coach Screws, Threaded Rods and a broad range of Nuts & Washers. Available in a full range of coatings including plain, zinc plated and galvanised.

Available in galvanised and B8 finishes.

## METRIC HEX SET SCREW

*BS66PCM*

- Natural Nylon
- DIN 933



## METRIC WING NUT

*NW66PCM*

- Natural Nylon
- DIN 315



## METRIC DOME HEX NUT

*ND66PCM*

- Natural Nylon
- DIN 1587



## METRIC HEX FLANGE NUT

*NF66PCM*

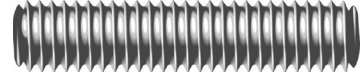
- Natural Nylon
- HEC



## METRIC ALLTHREAD 1M & 3M

*AL16PCM*

- SS 316
- DIN 975



## ACME 6 TPI ALLTHREAD 12FT

*ASMSPA*

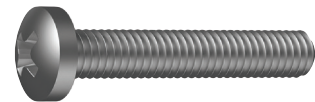
- Plain
- HEC
- Grade 1



## METRIC METAL THREAD PAN PHILLIPS

*MSMSZPPM*

- Zinc Plated
- AS 1427:1996
- Mild Steel



## METRIC HEX COUPLER

*AXHC05Z*

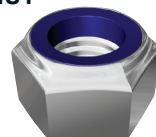
- Zinc Plated
- HEC
- Class 5



## METRIC NYLOC® NUT

*NN06ZCM*

- Zinc Plated
- DIN 985
- Class 6



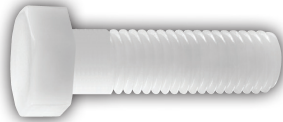
**NYLOC®**



## METRIC HEX BOLT

*BH66PCM*

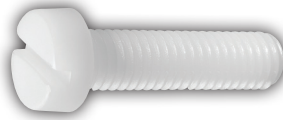
- Natural Nylon
- DIN 931



## METRIC CHEESE SLOT SCREW

*MS66ESM*

- Natural Nylon
- DIN 84



## UNC ROUND SLOT SCREW

*MS66OS*

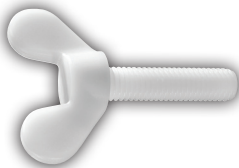
- Natural Nylon
- HEC



## METRIC WING SCREW

*MS66PWM*

- Natural Nylon
- DIN 316



## METRIC SOCKET HEAD CAP SCREW

*SH66PCM*

- Natural Nylon
- DIN 912



## ALLTHREAD ROD

*AN66PCM*

- Natural Nylon
- DIN 975



## METRIC HEX NUT

*NH66PCM*

- Natural Nylon
- DIN 934

