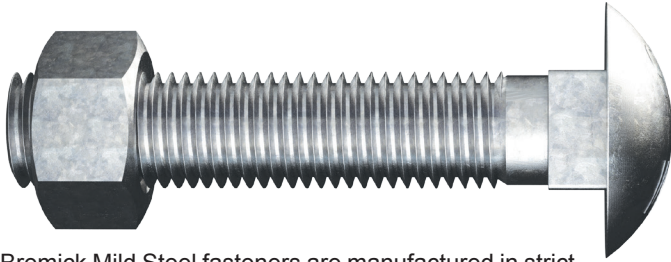


MILD STEEL BOLTS & NUTS

BREMICK



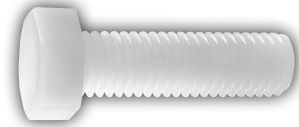
Bremick Mild Steel fasteners are manufactured in strict conformance with Australian Standards. Our range includes: Metric & BSW Bolt and Nuts, Metric & BSW Set Screws, Metric & BSW Cup Head Bolts, Coach Screws, Threaded Rods and a broad range of Nuts & Washers. Available in a full range of coatings including plain, zinc plated and galvanised.

Available in galvanised and B8 finishes.

METRIC HEX SET SCREW

BS66PCM

- Natural Nylon
- DIN 933



METRIC WING NUT

NW66PCM

- Natural Nylon
- DIN 315



METRIC DOME HEX NUT

ND66PCM

- Natural Nylon
- DIN 1587



METRIC HEX FLANGE NUT

NF66PCM

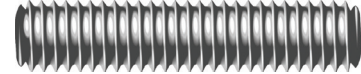
- Natural Nylon
- HEC



METRIC ALLTHREAD 1M & 3M

AL16PCM

- SS 316
- DIN 975



ACME 6 TPI ALLTHREAD 12FT

ASMSPA

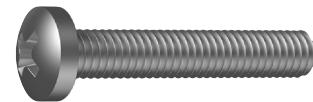
- Plain
- HEC
- Grade 1



METRIC METAL THREAD PAN PHILLIPS

MSMSZPPM

- Zinc Plated
- AS 1427:1996
- Mild Steel



METRIC HEX COUPLER

AXHC05Z

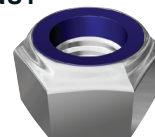
- Zinc Plated
- HEC
- Class 5



METRIC NYLOC® NUT

NN06ZCM

- Zinc Plated
- DIN 985
- Class 6



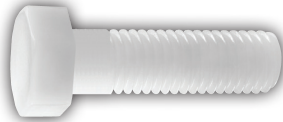
NYLOC®



METRIC HEX BOLT

BH66PCM

- Natural Nylon
- DIN 931



METRIC CHEESE SLOT SCREW

MS66ESM

- Natural Nylon
- DIN 84



UNC ROUND SLOT SCREW

MS66OS

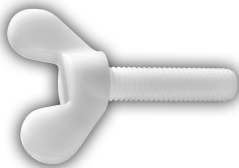
- Natural Nylon
- HEC



METRIC WING SCREW

MS66PWM

- Natural Nylon
- DIN 316



METRIC SOCKET HEAD CAP SCREW

SH66PCM

- Natural Nylon
- DIN 912



ALLTHREAD ROD

AN66PCM

- Natural Nylon
- DIN 975



METRIC HEX NUT

NH66PCM

- Natural Nylon
- DIN 934

