

TCT – MULTI-PURPOSE

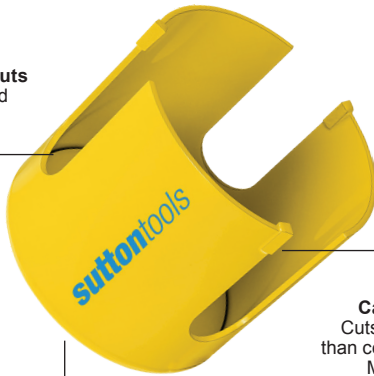
54mm Cutting Depth

Suited to cut timber, hardwood, softwood, MDF, plasterboard, compressed fibre cement sheet, cement sheet, plastics, ceramic tiles and abrasive materials.

suttontools



Deep cut-outs
For swift and
easy core
ejection



International
Thread Standard
Accepts all arbors

Tungsten
Carbide Tipped
Cuts 5 times faster
than conventional Bi-
Metal holesaws
in timber

Diameter		UNF Thread	Arbor	Item #
mm	inch			
16	5/8	1/2	UA1	H127 0160
19	3/4	1/2	UA1	H127 0190
20	-	1/2	UA1	H127 0200
22	7/8	1/2	UA1	H127 0220
25	1	1/2	UA1	H127 0250
29	1-1/8	1/2	UA1	H127 0290
30	1-3/16	1/2	UA1	H127 0300
32	1-1/4	5/8	UA2, QFX	H127 0320
35	1-3/8	5/8	UA2, QFX	H127 0350
38	1-1/2	5/8	UA2, QFX	H127 0380
40	1-9/16	5/8	UA2, QFX	H127 0400
41	1-5/8	5/8	UA2, QFX	H127 0410
44	1-3/4	5/8	UA2, QFX	H127 0440
51	2	5/8	UA2, QFX	H127 0510
54	2-1/8	5/8	UA2, QFX	H127 0540
57	2-1/4	5/8	UA3, QFX	H127 0570
60	2-3/8	5/8	UA3, QFX	H127 0600
64	2-1/2	5/8	UA3, QFX	H127 0640
70	2-3/4	5/8	UA3, QFX	H127 0700
76	3	5/8	UA3, QFX	H127 0760
86	3-3/8	5/8	UA3, QFX	H127 0860
89	3-1/2	5/8	UA3, QFX	H127 0890
92	3-5/8	5/8	UA3, QFX	H127 0920
102	4	5/8	UA3, QFX	H127 1020
111	4-3/8	5/8	UA3, QFX	H127 1110
121	4-3/4	5/8	UA3, QFX	H127 1210
127	5	5/8	UA3, QFX	H127 1270
152	6	5/8	UA3, QFX	H127 1520

Accessories

Pilot	BD24, BD26
-------	------------



Easy
core
ejection



2-up cutting
to enlarge
existing holes



Cut extreme angles

DIAMOND PLUS™ HOLE SAW ACCESSORIES



Product Code	Description
49568025	Diamond Plus™ Retractable Starter Bit
49567130	Diamond Plus™ Retractable Starter Bit 22-29mm
49567135	Diamond Plus™ Arbor with Retractable Star
4932430464	Angle Grinder Adapter M14 22mm-29mm
4932430465	Angle Grinder Adapter M14 32mm-64mm

BIG HAWG™ WITH CARBIDE TEETH



Product Code	Description
49569200	BIG HAWG™ with Carbide Teeth 35mm (1-3/8")
49569205	BIG HAWG™ with Carbide Teeth 44mm (1-3/4")
49569210	BIG HAWG™ with Carbide Teeth 54mm (2-1/8")
49569215	BIG HAWG™ with Carbide Teeth 57mm (2-1/4")
49569220	BIG HAWG™ with Carbide Teeth 65mm (2-9/16")
49569225	BIG HAWG™ with Carbide Teeth 70mm (2-3/4")
49569230	BIG HAWG™ with Carbide Teeth 76mm (3")
49569240	BIG HAWG™ with Carbide Teeth 92mm (3-5/8")
49569245	BIG HAWG™ with Carbide Teeth 102mm (4")
49569255	BIG HAWG™ with Carbide Teeth 108mm (4-1/4")
49569265	BIG HAWG™ with Carbide Teeth 117mm (4-5/8")
49569270	BIG HAWG™ with Carbide Teeth 133mm (5-1/4")
49569275	BIG HAWG™ with Carbide Teeth 159mm (6-1/4")
49569300	BIG HAWG™ with Carbide Teeth Pilot Bit
49569305	BIG HAWG™ with Carbide Teeth Arbor

TCT Holesaw

Metric: 16mm - 152mm

Ideal for the widest range of materials:
Aluminium, Plasterboard, Ceramic, Plastic
& Ceramic

MULTI PURPOSE 10x LIFE Alpha



Electrician's
TCT
Holesaw Kit

Tradie's
TCT
Holesaw Kit

Plumber's
TCT
Holesaw Kit

HEAVY DUTY BI-METAL SETS

32mm Cutting Depth

Used for machine or hand drilling and are suited to cut steels, stainless steel, cast iron, non-ferrous materials, plastic and wood. Use Sutton Tools lubricating fluid to increase the life of your tool when cutting metal.

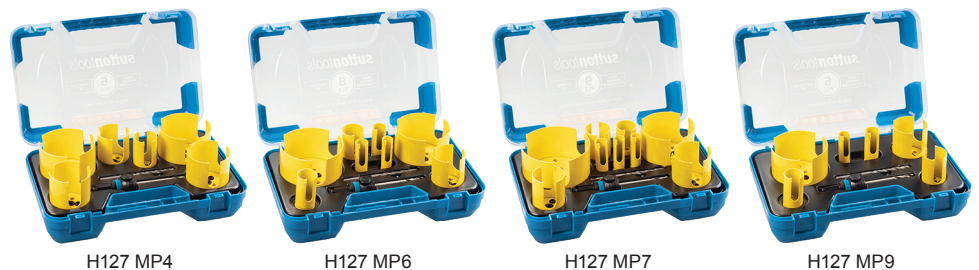


Description	Arbor & Adaptor	Pilot	Pieces	Item #
Heavy Duty Bi-Metal Holesaw Sets				
Starter Set - Holesaws: 20, 25, 32, 38 & 54mm	QFX, 2 x QF4	BD26	5	H125 BM1
Maintenance Set - Holesaws: 19, 22, 25, 32, 35, 38, 44, 51, 54, 63 & 76mm	QFX, 3 x QF4	BD26	11	H125 BM3
General Purpose Set - Holesaws: 16, 19, 22, 25, 29, 32, 35, 38, 44 & 51mm	QFX, 5 x QF4	BD26	10	H125 BM5
Carpenter Set - Holesaws: 16, 19, 22, 25, 32, 38, 54, 92 & 102mm	QFX, 4 x QF4	BD26	9	H125 BM6
Plumber Set - Holesaws: 44, 57, 63, 92 & 111mm	QFX	BD26	5	H125 BM7
Plumber Set - Holesaws: 16, 19, 20, 22, 35, 44, 57, 63, 92 & 111mm	QFX, 4 x QF4	BD26	10	H125 BM8
Electrician Set - Holesaws: 16, 20, 22, 25, 32, 40 & 51mm	QFX, 4 x QF4	BD26	7	H125 BM9
Electrician Set - Holesaws: 16, 20, 22, 25, 32, 40, 51, 60 & 92mm	QFX, 4 x QF4	BD26	9	H125 BM10
Lock Installation Kit - Holesaws: 22, 25 & 54mm	BA1 & adaptor 1 x door lock guide		3	H125 S11

TCT – MULTI-PURPOSE SETS

54mm Cutting Depth

Suited to cut timber, hardwood, softwood, MDF, plasterboard, compressed fibre cement sheet, cement sheet, plastics, ceramic tiles and abrasive materials.



Description	Arbor	Pilot	Pieces	Item #
Downlight Set Holesaws: 41, 54, 64, 70, 89 & 92mm	Quick Release	TCT x 2	6	H127 MP4
Carpenter Set Holesaws: 19, 22, 25, 32, 38, 54, 92 & 102mm	Quick Release	TCT x 2	8	H127 MP6
Plumber Set Holesaws: 19, 20, 22, 35, 44, 51, 64, 92 & 111mm	Quick Release	TCT x 2	9	H127 MP7
Electrician Set Holesaws: 20, 25, 32, 40, 60 & 92mm	Quick Release	TCT x 2	6	H127 MP9

ARBORS & ACCESSORIES

Quickfit Arbors – the strongest arbor in the market for heavy duty cutting. Designed to assist in the quick location and fitment for the complete Sutton Tools range of Holesaw products.

Pilot Drill	Material	Diameter	Length
H112 BD24 	HSS	6.35mm (1/4")	82mm (3-1/4")
H112 BD26 	HSS	6.35mm (1/4")	104mm (4-1/8")
H122 6206 	TCT	7mm	125mm
QF4 Adaptor H122 QF4 			

Arbors	Holesaw Size	Shank	Chuck	Thread
H112 UA1 	14-30mm	11/32" Hex	10mm	1/2" UNF
H112 UA2 	32-54mm	11/32" Hex	10mm	5/8" UNF
H112 UA3 	32-152mm	7/16" Hex	13mm	5/8" UNF
H103 QFX 	32-152mm	7/16" Hex	13mm	5/8" UNF
H122 4311-Quick Release 	14-210mm	7/16" Hex	13mm	1/2" or 5/8" UNF

HOLE DOZER™ BI-METAL HOLE SAWS

Made in the USA, the MILWAUKEE® HOLE DOZER™ Hole Saw features Rip Guard, the strongest tooth form in the industry, backed by the Rip Guard Limited Lifetime Tooth Break Warranty. Each tooth is built with more steel behind the cutting edge for added strength. The Rip Guard warranty on tooth breaks is a first for the hole saw industry. The added tooth strength along with 8% cobalt give added life to the teeth, allowing for increased productivity on the jobsite, as well as continued hole quality. The HOLE DOZER™ includes Plug Jack, an all access slot design that allows for full access during plug removal. The Plug Jack gives access lower into the cup for thick material and higher towards the teeth for thin material. With multiple positions to apply leverage and better plug access, Plug Jack increases productivity and eliminates wasted downtime between holes. For fast, tool-free change-outs.



Product Code	Description
49569690	HOLE DOZER™ Hole Saw 14mm (9/16")
49569603	HOLE DOZER™ Hole Saw 16mm (5/8")
49569604	HOLE DOZER™ Hole Saw 18mm (11/16")
49569605	HOLE DOZER™ Hole Saw 19mm (3/4")
49569692	HOLE DOZER™ Hole Saw 20mm (25/32")
49569606	HOLE DOZER™ Hole Saw 21mm (13/16")
49569607	HOLE DOZER™ Hole Saw 22mm (7/8")
49569608	HOLE DOZER™ Hole Saw 24mm (15/16")
49569609	HOLE DOZER™ Hole Saw 25mm (1")
49569610	HOLE DOZER™ Hole Saw 27mm (1-1/16")
49569611	HOLE DOZER™ Hole Saw 29mm (1-1/8")
49569612	HOLE DOZER™ Hole Saw 30mm (1-3/16")
49569613	HOLE DOZER™ Hole Saw 32mm (1-1/4")
49569614	HOLE DOZER™ Hole Saw 33mm (1-5/16")
49569615	HOLE DOZER™ Hole Saw 35mm (1-3/8")
49569616	HOLE DOZER™ Hole Saw 37mm (1-7/16")
49569617	HOLE DOZER™ Hole Saw 38mm (1-1/2")
49569618	HOLE DOZER™ Hole Saw 40mm (1-9/16")
49569619	HOLE DOZER™ Hole Saw 41mm (1-5/8")
49569620	HOLE DOZER™ Hole Saw 43mm (1-11/16")
49569621	HOLE DOZER™ Hole Saw 44mm (1-3/4")
49569622	HOLE DOZER™ Hole Saw 46mm (1-13/16")
49569623	HOLE DOZER™ Hole Saw 48mm (1-7/8")
49569695	HOLE DOZER™ Hole Saw 50mm (1-59/64")
49569624	HOLE DOZER™ Hole Saw 51mm (2")
49569625	HOLE DOZER™ Hole Saw 52mm (2-1/16")

Product Code	Description
49569626	HOLE DOZER™ Hole Saw 54mm (2-1/8")
49569628	HOLE DOZER™ Hole Saw 57mm (2-1/4")
49569629	HOLE DOZER™ Hole Saw 59mm (2-5/16")
49569630	HOLE DOZER™ Hole Saw 60mm (2-3/8")
49569631	HOLE DOZER™ Hole Saw 64mm (2-1/2")
49569632	HOLE DOZER™ Hole Saw 65mm (2-9/16")
49569633	HOLE DOZER™ Hole Saw 67mm (2-5/8")
49569635	HOLE DOZER™ Hole Saw 70mm (2-3/4")
49569636	HOLE DOZER™ Hole Saw 73mm (2-7/8")
49569637	HOLE DOZER™ Hole Saw 76mm (3")
49569638	HOLE DOZER™ Hole Saw 79mm (3-1/8")
49569639	HOLE DOZER™ Hole Saw 83mm (3-1/4")
49569640	HOLE DOZER™ Hole Saw 86mm (3-3/8")
49569641	HOLE DOZER™ Hole Saw 89mm (3-1/2")
49569642	HOLE DOZER™ Hole Saw 92mm (3-5/8")
49569643	HOLE DOZER™ Hole Saw 95mm (3-3/4")
49569644	HOLE DOZER™ Hole Saw 98mm (3-7/8")
49569645	HOLE DOZER™ Hole Saw 102mm (4")
49569646	HOLE DOZER™ Hole Saw 105mm (4-1/8")
49569647	HOLE DOZER™ Hole Saw 108mm (4-1/4")
49569648	HOLE DOZER™ Hole Saw 111mm (4-3/8")
49569649	HOLE DOZER™ Hole Saw 114mm (4-1/2")
49569650	HOLE DOZER™ Hole Saw 121mm (4-3/4")
49569652	HOLE DOZER™ Hole Saw 127mm (5")
49569654	HOLE DOZER™ Hole Saw 140mm (5-1/2")
49569656	HOLE DOZER™ Hole Saw 152mm (6")

HOLE SAW ACCESSORIES



Product Code	Description
49567010	Hole Saw Arbor 16mm-30mm 3/8"
49567055	Hole Saw Arbor 32mm-175mm Turn Release
49567240	Hole Saw Arbor 32mm-175mm Pull Release
49568000	Hole Saw Pilot Drill 1/4" x 4"
49568010	Hole Saw Pilot Drill 1/4" x 3-1/2"
49568033A	Hole Saw Pilot Drill 1/4" x 3-1/2" PKT 12
49561006	Universal Hole Saw Case – Small
49561007	Universal Hole Saw Case – Large

HOLE DOZER™ KITS

Product Code	Description
49224095	HOLE DOZER™ Hole Saw Kit 10 Pce 22mm, 29mm, 35mm, 44mm, 51mm, 64mm, (2) Arbors, (2) Pilot
49224175	HOLE DOZER™ Hole Saw Kit 15 Pce 19mm, 22mm, 25mm, 29mm, 35mm, 38mm, 44mm, 51mm, 54mm, 57mm, 64mm, (2) Arbors, (2) Pilot
49224151	HOLE DOZER™ Plumbers Hole Saw Kit AU 14 Pce 19mm, (2) 25mm, 32mm, 35mm, 40mm, 44mm, 51mm, 64mm, 92mm, (2) Arbors, (2) Pilot
49224097	HOLE DOZER™ Electricians Hole Saw Kit AU 18 Pce (2) 16mm, (2) 20mm, (2) 22mm, (2) 25mm, (2) 32mm, (2) 40mm, (2) 51mm, (2) Arbors, (2) Pilot
49224035	HOLE DOZER™ General Purpose Hole Saw Kit AU 19 Pce 16mm, (2) 20mm, 22mm, (2) 25mm, 32mm, 40mm, (2) 51mm, 54mm, 64mm, 76mm, 89mm, 92mm, (2) Arbors, (2) Pilot
49224185	HOLE DOZER™ Hole Saw Kit 28 Pce 19mm, 22mm, 25mm, 29mm, 32mm, 35mm, 38mm, 44mm, 51mm, 54mm, 57mm, 64mm, 67mm, 76mm, 83mm, 86mm, 92mm, 95mm, 105mm, 108mm, 114mm, 121mm, (3) Arbors, (3) Pilot

BI-METAL – COBALT

32mm Cutting Depth

Used for machine or hand drilling and are suited to cut steels, stainless steel, cast iron, non-ferrous materials, plastic and wood. Use Sutton Tools lubricating fluid to increase the life of your tool when cutting metal.

suttontools



Varied Pitched Teeth
Reduces vibration for cleaner finish and greater accuracy

Fast ejection slots



International Thread Standard
Accepts all arbors

Made from Bi-Metal Cobalt HSS
For toughness and longer life

Diameter		UNF Thread	Arbor	Item #
mm	inch			
14	9/16	1/2	UA1	H125 0140
16	5/8	1/2	UA1	H125 0160
17	11/16	1/2	UA1	H125 0170
19	3/4	1/2	UA1	H125 0190
20	-	1/2	UA1	H125 0200
21	13/16	1/2	UA1	H125 0210
22	7/8	1/2	UA1	H125 0220
24	15/16	1/2	UA1	H125 0240
25	1	1/2	UA1	H125 0250
27	1-1/16	1/2	UA1	H125 0270
29	1-1/8	1/2	UA1	H125 0290
30	1-3/16	1/2	UA1	H125 0300
32	1-1/4	5/8	UA2, QFX	H125 0320
33	1-5/16	5/8	UA2, QFX	H125 0330
35	1-3/8	5/8	UA2, QFX	H125 0350
37	1-7/16	5/8	UA2, QFX	H125 0370
38	1-1/2	5/8	UA2, QFX	H125 0380
40	1-9/16	5/8	UA2, QFX	H125 0400
41	1-5/8	5/8	UA2, QFX	H125 0410
43	1-11/16	5/8	UA2, QFX	H125 0430
44	1-3/4	5/8	UA2, QFX	H125 0440
46	1-13/16	5/8	UA2, QFX	H125 0460
48	1-7/8	5/8	UA2, QFX	H125 0480
51	2	5/8	UA2, QFX	H125 0510
52	2-1/16	5/8	UA2, QFX	H125 0520
54	2-1/8	5/8	UA2, QFX	H125 0540
56	2-3/16	5/8	UA3, QFX	H125 0560
57	2-1/4	5/8	UA3, QFX	H125 0570
59	2-5/16	5/8	UA3, QFX	H125 0590
60	2-3/8	5/8	UA3, QFX	H125 0600
63	2-1/2	5/8	UA3, QFX	H125 0630
65	2-9/16	5/8	UA3, QFX	H125 0650
67	2-5/8	5/8	UA3, QFX	H125 0670
70	2-3/4	5/8	UA3, QFX	H125 0700
73	2-7/8	5/8	UA3, QFX	H125 0730
76	3	5/8	UA3, QFX	H125 0760
79	3-1/8	5/8	UA3, QFX	H125 0790
83	3-1/4	5/8	UA3, QFX	H125 0830
86	3-3/8	5/8	UA3, QFX	H125 0860
89	3-1/2	5/8	UA3, QFX	H125 0890
92	3-5/8	5/8	UA3, QFX	H125 0920
95	3-3/4	5/8	UA3, QFX	H125 0950
98	3-7/8	5/8	UA3, QFX	H125 0980
102	4	5/8	UA3, QFX	H125 1020
105	4-1/8	5/8	UA3, QFX	H125 1050
108	4-1/4	5/8	UA3, QFX	H125 1080
111	4-3/8	5/8	UA3, QFX	H125 1110
114	4-1/2	5/8	UA3, QFX	H125 1140
121	4-3/4	5/8	UA3, QFX	H125 1210
127	5	5/8	UA3, QFX	H125 1270
140	5-1/2	5/8	UA3, QFX	H125 1400
152	6	5/8	UA3, QFX	H125 1520
Pilot				BD24, BD26

ENGINEER'S 13 PC HOLE SAW SET

Article No.: 25900020

PFERD

- Hole Saw Sizes: 20, 22, 25, 32, 40, 44, 51, 57 & 64mm
- Hex Shank Arbor: 1/4" & 3/8"
- Pilot Drill: 6/90 (long)
- Adaptor



WHITE POINTER 8% COBALT Bi-Metal Holesaws

Sizes Available: 14mm - 250mm

Ideal for: Steel, stainless steel, cast iron, non-ferrous metal, wood and plastic

- Multiple ejection slots for rapid removal of thick and thin plugs
- 4/6 variable tooth configuration reduces vibration for a smooth, accurate cut
- Unique multiple grinding technology for faster cutting and longer life



WATCH VIDEO

HEAVY DUTY stays sharper longer

WHITE POINTER

Strong ABS plastic case with aluminium latches, withstands tough job-site conditions

Alpha

Holesaw Kits

- Electrician's Kit I 11 PCE
- Tradies Kit I 13 PCE
- Plumbers Kit I 11 PCE
- Locksmiths Kit I 11 PCE



Ultimate Kits

- Electrician's Kit I 19 PCE
- Tradies Kit I 21 PCE
- Locksmiths Kit I 16 PCE



HOLE DOZER™ WITH CARBIDE TEETH



Product Code	Description
49560702	HOLE DOZER™ with Carbide Teeth 19mm (3/4")
49560704	HOLE DOZER™ with Carbide Teeth 22mm (7/8")
49560707	HOLE DOZER™ with Carbide Teeth 25mm (1")
49560708	HOLE DOZER™ with Carbide Teeth 29mm (1-1/8")
49560710	HOLE DOZER™ with Carbide Teeth 32mm (1-1/4")
49560712	HOLE DOZER™ with Carbide Teeth 35mm (1-3/8")
49560713	HOLE DOZER™ with Carbide Teeth 38mm (1-1/2")
49560717	HOLE DOZER™ with Carbide Teeth 44mm (1-3/4")
49560719	HOLE DOZER™ with Carbide Teeth 48mm (1-7/8")
49560720	HOLE DOZER™ with Carbide Teeth 51mm (2")
49560722	HOLE DOZER™ with Carbide Teeth 54mm (2-1/8")
49560724	HOLE DOZER™ with Carbide Teeth 57mm (2-1/4")
49560726	HOLE DOZER™ with Carbide Teeth 60mm (2-3/8")
49560727	HOLE DOZER™ with Carbide Teeth 64mm (2-1/2")
49560729	HOLE DOZER™ with Carbide Teeth 67mm (2-5/8")
49560731	HOLE DOZER™ with Carbide Teeth 70mm (2-3/4")
49560734	HOLE DOZER™ with Carbide Teeth 76mm (3")
49560738	HOLE DOZER™ with Carbide Teeth 89mm (3-1/2")
49560739	HOLE DOZER™ with Carbide Teeth 92mm (3-5/8")
49560742	HOLE DOZER™ with Carbide Teeth 102mm (4")
49560744	HOLE DOZER™ with Carbide Teeth 108mm (4-1/4")
49560746	HOLE DOZER™ with Carbide Teeth 114mm (4-1/2")
49560748	HOLE DOZER™ with Carbide Teeth 127mm (5")
49560749	HOLE DOZER™ with Carbide Teeth 152mm (6")

HOLE DOZER™ WITH CARBIDE TEETH KITS

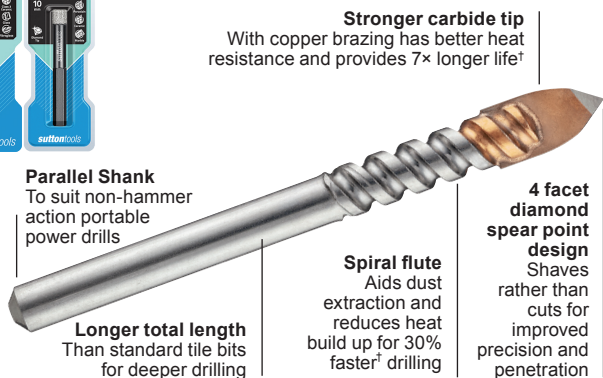


Product Code	Description
49223079	HOLE DOZER™ with CARBIDE TEETH 9 Pce (1) 22mm HOLE DOZER™ with Carbide Teeth (49560704) (1) 29mm HOLE DOZER™ with Carbide Teeth (49560708) (1) 35mm HOLE DOZER™ with Carbide Teeth (49560712) (1) 51mm HOLE DOZER™ with Carbide Teeth (49560720) (1) 64mm HOLE DOZER™ with Carbide Teeth (49560727) (1) Small Thread Arbor, 3/8" Shank (49567010) / (1) Large Thread Quick Change Arbor, 7/16" Shank (49569100) / (2) Pilot Bit & (1) Hex Key
49223090	HOLE DOZER™ with CARBIDE TEETH 12 Pce (1) 22mm HOLE DOZER™ with Carbide Teeth (49560704) (1) 25mm HOLE DOZER™ with Carbide Teeth (49560707) (1) 29mm HOLE DOZER™ with Carbide Teeth (49560708) (1) 35mm HOLE DOZER™ with Carbide Teeth (49560712) (1) 38mm HOLE DOZER™ with Carbide Teeth (49560713) (1) 44mm HOLE DOZER™ with Carbide Teeth (49560717) (1) 48mm HOLE DOZER™ with Carbide Teeth (49560719) (1) 51mm HOLE DOZER™ with Carbide Teeth (49560720) (1) 57mm HOLE DOZER™ with Carbide Teeth (49560724) (1) 64mm HOLE DOZER™ with Carbide Teeth (49560727) (1) Small Thread Arbor, 3/8" Shank (49567010) / (1) Large Thread Quick Change Arbor, 7/16" Shank (49569100) / (2) Pilot Bit & (1) Hex Key

GLASS & TILE



For smooth drilling in ceramic tiles, glass, brick, plastics, and fiberglass.
Note: Not suitable for toughened glass and hard tiles above class 3.



Diameter mm	O/A Length	Item #
Glass & Tile Drill		
3.0	80	D604 0300
4.0	80	D604 0400
5.0	80	D604 0500
6.0	80	D604 0600
6.5	100	D604 0650
8.0	100	D604 0800
10.0	100	D604 1000
12.0	100	D604 1200

GLASS AND TILE DRILL BITS



The MILWAUKEE® Glass and Tile Drill Bits features an exact start tip for clean holes and minimal walking of the bit in glass and ceramic tile. Our Glass and Tile bits have also been designed with sharpened carbide that allows for faster tile drilling than standard glass and tile drill bits, along with a reinforced carbide head to provide increased durability in high speed drilling applications with drill drivers only. Available sizes range from 4mm up to 16mm.

Product Code	Description
4932471956	4mm x 50mm Glass and Tile Bit
4932471957	5mm x 50mm Glass and Tile Bit
4932471958	6mm x 60mm Glass and Tile Bit
4932471856	6.5mm x 60mm Glass and Tile Bit
4932471959	8mm x 60mm Glass and Tile Bit
4932471960	10mm x 95mm Glass and Tile Bit
4932471961	12mm x 95mm Glass and Tile Bit
4932471858	14mm x 95mm Glass and Tile Bit
4932471859	16mm x 100mm Glass and Tile Bit

GLASS & TILE

9GT Range

Metric: 3mm - 12mm

Ideal for: Drilling mirrors, glass (excluding toughened glass) and all ceramic tiles – including PEI4



DiamondMAX

Core Bits

Metric: 6, 8, 10 & 12mm

Ideal for: Porcelain, Ceramic, Granite & Marble

Layered Diamond



CORE BITS DIAMOND – DRY CUT

suttontools

Trade quality for dry cutting in porcelain, monocottura and fully vitrified, marble, glazed, terracotta, polished sandstone, standard ceramic and sandstone tiles.



Diameter mm	Drilling Depth	O/A Length	Pieces	Item #
6	10	67	1	D618 0600
8	10	80	1	D618 0800
10	10	80	1	D618 1000
Set				
4 Pce Set: 6, 8, 10mm with Guide			4	D618 0004

IMPACT

Thin Sheet Bi-Metal Holesaw

Metric: 19mm - 38mm

Ideal for the widest range of materials: Stainless Steel, Steel, Aluminium & Plastic

1/4" QUICK CHANGE Suitable for impact drivers

10x LIFE



Scan to see Bi-Metal Holesaw in action

Metric: 8 piece set

Contains: 19, 22, 25, 29, 32, 35 & 38mm

Code: HSF-SET8

DIAMOND PLUS™ HOLE SAWS



Product Code	Description
49560503	Diamond Plus™ One Piece Hole Saw 5mm (3/16")
49560505	Diamond Plus™ One Piece Hole Saw 6mm (1/4")
49560501	Diamond Plus™ One Piece Hole Saw 6mm (1/4") 2Pk
49560507	Diamond Plus™ One Piece Hole Saw 8mm (5/16")
49560509	Diamond Plus™ One Piece Hole Saw 10mm (3/8")
49560511	Diamond Plus™ One Piece Hole Saw 12mm (1/2")
49560513	Diamond Plus™ One Piece Hole Saw 15mm (5/8")
49560515	Diamond Plus™ One Piece Hole Saw 20mm (3/4")
49560517	Diamond Plus™ One Piece Hole Saw 25mm (1")
49560500	Diamond Plus™ One Piece Hole Saw 3 Pce Set 1 x 5mm, 1 x 6mm, 1 x 8mm
49565605	Diamond Plus™ Hole Saw 22mm (7/8")
49565615	Diamond Plus™ Hole Saw 29mm (1-1/8")
49565620	Diamond Plus™ Hole Saw 32mm (1-1/4")
49565625	Diamond Plus™ Hole Saw 35mm (1-3/8")
49565630	Diamond Plus™ Hole Saw 38mm (1-1/2")
49565645	Diamond Plus™ Hole Saw 51mm (2")
49565660	Diamond Plus™ Hole Saw 64mm (2-1/2")

HSS HOLE CUTTER

Ideal for thin sheet materials: Stainless Steel, Metal & Sheet Metal

- 2mm cutting depth
- Accurate, fast and clean holes
- Replaceable pilot drill

VIEW FULL RANGE



TCT HOLE CUTTER

Ideal for: Stainless Steel, Sheet Metal, Metal, Aluminium & Fibreglass

- 5mm cutting depth in stainless steel when used with a battery drill
- 20mm cutting depth in stainless steel when using a low-speed drill press



TCT

25mm / 5mm Cutting Depth

Heavy Duty Tungsten Carbide Tooth (TCT) Holesaws are suitable for cutting steel, stainless steel, ferrous metals, aluminium, plastics and fibreglass. These holesaws will last up to 10x longer than standard Bi-Metal Holesaws.

Can be used in both hand and stationary drilling machines.

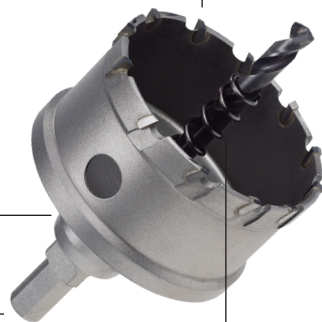
Precision Ground Tungsten Carbide Teeth
Produces clean, high quality cuts



Check out the demo



Safety Stopper
Prevents breakthrough, thus protecting the work surface



3-Flat Shank
For positive grip, preventing slippage in chuck

Ejector Spring
For automatic core ejection



H117 PDT1



H117 0005

Diameter		Pilot Drill	Pieces	Item #
mm	inch			
25mm Cutting Depth				
16	5/8	PDT2	1	H117 0160
19	3/4	PDT2	1	H117 0190
20	-	PDT2	1	H117 0200
22	7/8	PDT2	1	H117 0220
25	1	PDT2	1	H117 0250

Diameter		Pilot Drill	Pieces	Item #
mm	inch			
32	1-1/4	PDT2	1	H117 0320
38	1-1/2	PDT2	1	H117 0380
40	1-9/16	PDT2	1	H117 0400
50	1-15/16	PDT2	1	H117 0500
Set: 16, 20, 25, 32, 40mm		PDT2	5	H117 0005
Pilot Drill (PDT2) 6.0 x 76mm			1	H117 PDT2

TCT – PRO (SHORT)

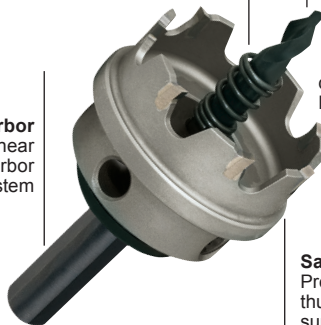
2-4mm Cutting Depth

Heavy Duty Tungsten Carbide Tooth (TCT) Holesaws are suitable for cutting steel, stainless steel, ferrous metals, aluminium, wood, chipboard, plastics and fibreglass. These holesaws will last up to 10x longer than standard Bi-Metal Holesaws.

Can be used in both hand and stationary drilling machines.



Ejector Spring
For automatic core ejection



Arbor
Anti-shear arbor system

Self-Centring Pilot Drill
Replaceable pilot drill secured tightly with grub screw

Tungsten Carbide Teeth
Precision ground for cutting difficult and abrasive materials. Producing smooth, high cutting capacity, performance and tool life

Safety Stopper
Prevents breakthrough, thus protecting the work surface



H108 0005

Diameter		Cutting Depth mm	Pieces	Item #
mm	inch			
16	5/8	4	1	H108 0160
19	3/4	4	1	H108 0190
20	-	4	1	H108 0200
21	13/16	4	1	H108 0210
22	7/8	4	1	H108 0220
25	1	4	1	H108 0250
28	-	4	1	H108 0280
30	1-3/16	4	1	H108 0300
32	1-1/4	4	1	H108 0320
35	1-3/8	4	1	H108 0350
38	1-1/2	4	1	H108 0380

Diameter		Cutting Depth mm	Pieces	Item #
mm	inch			
40	1-9/16	4	1	H108 0400
44	1-3/4	4	1	H108 0440
50	-	4	1	H108 0500
55	-	4	1	H108 0550
60	2-3/8	4	1	H108 0600
65	2-9/16	4	1	H108 0650
70	2-3/4	4	1	H108 0700
75	-	4	1	H108 0750
Set 16, 20, 25, 32, 40mm			5	H108 0005
Pilot Drill HSS 6.0 x 50mm			1	H108 0060
Suits TCT Holesaws				