

PLASTIC PACKING SHIMS



Reid™ Shims have been independently tested and rated with a 20t Working Load Limit determined in accordance with AS 3850.1:2015.

Designed for levelling and packing objects with a high load mass. Ideally suited to pre-cast concrete panels in the industrial, commercial and civil construction industries. Each shim is colour coded for easy selection, contains ribs for non slippage, is made with premium quality materials and are proven and tested out in the field.

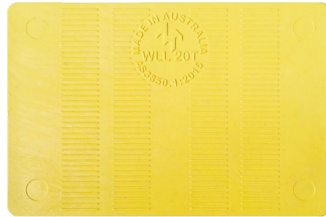
Reid™ Shims have been independently tested and now bear the 20t WLL as well as the Reid™ logo for identification. All Reid™ Shims are packed in durable poly bags and bear a label, featuring the batch number for traceability.

Available size: 100 x 150mm

- Meets Australian standard AS 3850.1-2015



Code	Description
10062	1mm Shims Brown
10063	2mm Shims Blue
10064	3mm Shims Green
10065	5mm Shims Yellow
10066	10mm Shims Black
10067	15mm Shims Grey
10068	20mm Shims White



PLASTIC PACKING HALF SHIMS



Designed for the levelling and packing of objects with high load mass. As it's name says, these shims are half the size of the panel shims. Ideally suited for, but not limited to, the precast panel industry. Each shim is colour coded to match its bigger brother for thickness identity and also contains ribbing on the faces for non-slippage. Also made from high quality materials, proven and tested in its field.

Available size: 75 x 100mm



- Meets Australian standard AS 3850.1-2015

Code	Description
10055	1/2 Shim 1mm Brown
10056	1/2 Shim 2mm Blue
10058	1/2 Shim 5mm Yellow
10059	1/2 Shim 10mm Black
10061	1/2 Shim 20mm White

PACKING SHIMS



20 Tonne Load (Tested & Approved) packer suitable for structural packing under panels, decking, machines and bridges.

Thickness: 1mm-20mm

AS 3850.1: 2015 - Prefabricated Concrete Elements, Part 1: General Requirements

ASTM D695 - 15: Standard Test method for compressive properties of rigid plastic.



MESH CHAIR

Panel chairs are used in the precast panel industry for holding mesh and some reo-bars at a required height prior to concreting. The four small points at the bottom of each chair reduces the unsightly exposure of plastic when the panel is erected.

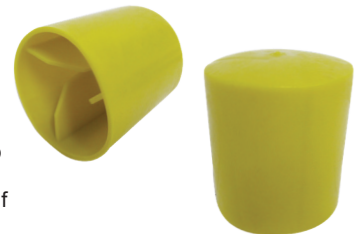


Code	Description
10054	Mesh Chair 65mm x 75mm

STAR PICKET GUARD



A plastic cap used in conjunction with reo bars and star picket posts to expose danger areas on the construction fields, for the safety and protection of persons and machinery. Please be aware that this product is not designed to stop impacts or impalements, but to reduce the seriousness of injuries if or when they occur.



ANTENNAE CAPS

Antennae cap protects the threads of a ferrule while pouring concrete. Provides effective seal through a tight push t coving the entire top of the ferrule. Locating pins indicate where Antennae cap is, so it can be removed.

Sizes available are: 12mm, 16mm, 20mm, 24mm



NAILING PLATES

Screws into the ferrule and fastened to the framework. Not only helps stabilise the insert when pouring, but also keeps concrete out of the thread when pouring.

Sizes available are: 12mm, 16mm, 20mm, 24mm

