

EASY-FORM™ BACKER ROD



Closed Cell Polyethylene Foam Rod

Trade Packs: Profiles: 6mm, 10mm, 13mm & 20mm.
Roll Length: 50m.

Bulk Packs: Available in 6mm, 10mm, 13mm, 15mm, 20mm, 25mm, 30mm, 40mm & 50mm.



EASY-FORM™ OPEN CELL BACKER ROD



Available in:

Profile (mm)	10	15	20	25	30	40	50
Roll Length (m)	200	150	100	80	60	30	20



DWV PLAIN BEND F/F 50MM X 90 DWVBF5090



- Complies with AS/NZS 1260
- WaterMark Certified
- Size range: 40mm to 10mm
- Working temperature: 0°C – 50°C

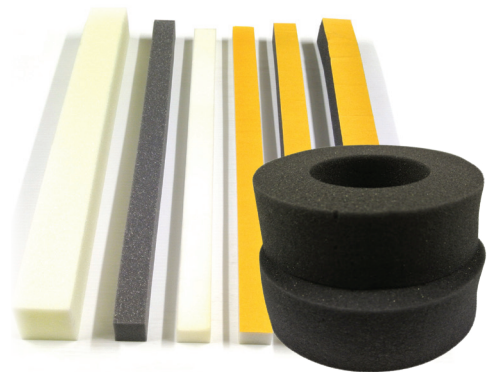


EASY-FORM™ CAULKING



Open Cell Caulking Strips And Donuts

Available with plain or adhesive backs in a large range of profiles.



EXTENSIVE RANGE OF PVC PRESSURE FITTINGS PF105045



- Comply with AS/NZS 1477
- WaterMark certified
- Complies with AS/NZS 4020 for drinking water application
- BEP – PVC certified
- DN15 – DN150 to 15mm – 150mm
- Working temperature: 0°C – 50°C
- Colour: White



EASY-FORM™ EXPANSION JOINT



Paperless Adhesive Back Expansion Joint

Roll Length: 25m, Widths: 50mm, 75mm, 100mm, 125mm, 150mm, 200mm, 250mm & 300mm.

Thickness: 10mm.



SOF-FORM™ PLAIN & ADHESIVE EXPANSION JOINT



Plain & Paper Back Adhesive Expansion Joint

Roll Length: 25m, Widths: 50mm, 75mm, 100mm, 125mm, 150mm, 200mm, 250mm & 300mm

Thickness: 10mm & 20mm Stock, others made to order.



EXTRUDED PLASTIC FILLET & MOCK JOINT

Extruded plastic edging fillet, available in 12mm & 19mm profiles.

40mm extruded plastic mock joint is also available on request.



THREADED INSERT

Cross hole threaded inserts (ferrules) are available in zinc, stainless steel and HDG on request.

Other types of threaded inserts can also be accessed on request.

For example coil bolt ferrules and elephant foot.



Code	Length
TIM12X65	12mm x 65mm
CFMS12	12mm x 75mm
CFMS16	16mm x 75mm
CFMS20	20mm x 75mm
CFM16	16mm x 96mm
CFM20	20mm x 96mm
CFM24	24mm x 96mm

SPIRAL DUCT TUBING

Spiral Duct has numerous applications throughout the Tilt-Up and Panel Precast market segments and is also used widely in special precast applications like casting bridge beams and other commercial concrete segments.

*Other dia. available on request



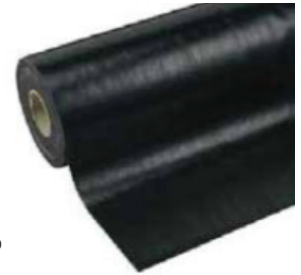
Sizes	Code
40mm dia. X 2.5m in length	SD40250
50mm dia. X 2.5m in length	SD50250
60mm dia. X 2.5m in length	SD60250
70mm dia. X 2.5m in length	SD70250

BUILDER'S PLASTIC – BLACK AND ORANGE

Builder's plastic is a commonly used product which has numerous applications throughout the building industry. Also known as concrete underlay, our building film meets Australian Standards for medium impact requirements. High impact film can also be obtained if required.

Size - Standard rolls - 4 metres (folded to 2 metres) x 50 metres in length

Type - High Impact
Thickness - 200 UM



Code	Colour
BPB250	Black
BPO250	Orange

CAST-IN AND PANEL CONNECTION PLATES



Corner Joining Plate



Panel Clip



D Stirrup Connection Plate with Ferrule



D Stirrup 3 Bars



D Stirrup 4 Bars



D Stirrup Connection Plate without Ferrule



Edge Plate with legs

Illustrations represent an example of the type/types of panel connection systems available.

Contact your CSS Member for more details.

Z BAR THREADED REINFORCING - FORMWORK SYSTEMS

Z-Bar is a threaded reinforcing bar typically used for formwork related applications throughout the construction industry.

Description	Code
Bar length – typically 3 metre	ZBAR-3M
100mm coupler	ZBARC-100MM
50mm coupler	ZBARC-50MM
Wingnut	ZBARWN
Flange plate	ZBARFP
Water Stop	ZBARWS



BEAVER CONCRETE CLUTCH

- Quick and simple clutch release when lifted
- Marked with WLL, batch ID, Date of Manufacture and a serial number
- Complies to AS 3850.1

Product Code	WLL (t)
260013	1.3
260025	2.5
260050	5

