

POINTED TROWELS



Flextool pointed trowels are produced using high carbon steel to optimise blade flexibility and durability. Flextool pointed trowels are also fitted with a single piece forged aluminium spine for extra strength and blade support. Available in both ProSoft rubber grip and solid moulded plastic handles.



Material Number	Description
FT4P1009-UNIT	FLX POINTED TROWEL 100W X 355L

WOOD FLOATS



Wood Floats are used for creating a rough non-slip or textured finish on the concrete surface. Used predominately for outdoor areas such as footpaths and other pedestrian traffic applications. Available with ProSoft rubber handle for user comfort.



Material Number	Description
FT4P8002-UNIT	FLX WOOD FLOAT 112W X 380L

SQUARE TROWELS



Flextool square trowels are produced using high carbon steel to optimise blade flexibility and durability. Flextool square trowels are also fitted with a single piece forged aluminium spine for extra strength and blade support. Available with ProSoft rubber grip handles in both closed and open style configurations.



Material Number	Description
FT4P1002-UNIT	FLX SQUARE TROWEL 120W X 280L
FT41002O-UNIT	FLX SQUARE TROWEL 120W X 280L OPEN GRIP

EDGERS



Concrete Edger Bull Nose trowels are used to create a smooth finish to slab edges. They produce a curved profile finish on the concrete edge to prevent chipping and damage to the concrete. Available with ProSoft handle for user comfort.

Material Number	Description
FT44008S-UNIT	FLX EDGER 75W X 140L X 19R X 19D
FT47008S-UNIT	FLX EDGER 140W X 200L X 20R X 19D

STEEL FLOATS



Steel Floats or "Sides Up" trowels as they are sometimes referred to are used for creating a non-slip finish on the concrete surface, also known as a stippled or coved finish. They are also used for trowelling dry shake materials into the top surface of the concrete. Steel floats produce a finer texture to wood floats and are more durable and longer wearing due to their solid steel blade. Available with ProSoft rubber handle for user comfort.



Material Number	Description
FT42019S-UNIT	FLX STEEL FLOAT 150W X 380L

SCREEDS



Flextool Concrete Screeds are made from durable yet lightweight aluminium extrusions. Concrete screeds are used to level the concrete after it has been placed.



Material Number	Description
FT401808-UNIT	FLX SCREED CLAMPED HANDLE 1500MM VIAL
FT401813-UNIT	FLX SCREED CLAMPED HANDLE 3000MM VIAL

MAGNESIUM FLOATS



All Flextool magnesium floats are produced with a broken-in or curved blade and come standard with a ProSoft rubber grip for user comfort.



Material Number	Description
FT4P2051-UNIT	FLX MAGNESIUM FLOAT 80W X 405L

RAKES



Material Number	Description
FT4CC013-UNIT	FLX CONCRETE RAKE PUSH & PULL

**WHEN YOU PURCHASE A
MARSHALLTOWN® BRICK TROWEL
THERE ARE NO SURPRISES**



We precisely maintain blade chemistry and hardness to guarantee that your trowel will perform better than expected. Our handle rise is always set at precisely the same angle. This all means that every single Marshalltown brick trowel we make is great. Most manufacturers can make a few good brick trowels, and maybe even one or two great ones. Choosing a Marshalltown brick trowel means that you choose to get a great brick trowel every time.

**PERMASHAPE® “FLAT” GOLDEN STAINLESS
FINISHING TROWEL
MT13GSFPD (506417)**



- Guaranteed to stay flat use after use
- Made from highest grade stainless steel
- Shaped and tempered to a golden finish
- Size: 330x127mm (13 x 5")
- Handle: Durasoft



**PERMASHAPE® “FLAT” STAINLESS STEEL
FINISHING TROWEL
MT73SSFPDXH (506505)**



- Guaranteed to stay flat use after use
- Made from highest grade stainless steel
- Properly shaped and tempered
- Size: 356 x 121mm (14 x 4¾")
- Handle: Durasoft



**STAINLESS STEEL FINISHING TROWEL
MTMXS73SDH (506590)**



- Highest grade hardened and tempered bright or golden stainless steel blade, properly shaped
- Aluminium alloy Xtralite® mounting is lightweight but very strong
- Size: 356 x 121mm (14 x 4¾")
- Handle: Durasoft



PHILADELPHIA PATTERN BRICK TROWELS



- Forged from a single piece of high carbon steel, then heat treated for strength and durability
- Blade is taper ground and polished
- Handle rise is set for the correct hang and balance
- Impact area is extra strong



MT19/11FG

Product Code	Size (mm)	Size (in)	Handle
MT19/11FG (506440)	279 x 140	11 x 5 ½	Durasoft
MT19/12FGXH (506442)	305 x 152	12 x 6	Durasoft
MT19L12XH (805085)	305 x 152	12 x 6	Leather
MT19P12XH (506444)	305 x 152	12 x 6	Plastic

WIDE LONDON PATTERN BRICK TROWELS



- Forged from a single piece of high carbon steel, then heat treated for strength and durability
- Handle rise is set for the correct hang and balance
- Blade is taper ground and polished
- Impact area is extra strong



MT34/11FG

Product Code	Size (mm)	Size (in)	Handle
MT34/12FGXH (506451)	305 x 146	12 x 5 ¾	Durasoft
MT34L12XH (805084)	305 x 146	12 x 5 ¾	Leather
MT34P12XH (506456)	305 x 146	12 x 5 ¾	Plastic

BEVELLED END MAGNESIUM HAND FLOATS



- Extruded from very hard, durable, lightweight magnesium
- Our most popular float design
- Recommended for use with air entrained concrete
- Magnesium floats produce a smoother finish than wood



MT145D

Product Code	Size (mm)	Size (in)	Handle
MT142D (506421)	305 x 79	12 x 3 ¼	Durasoft
MT145D (506424)	406 x 79	16 x 3 ¼	Durasoft
MT146D (506426)	508 x 79	20 x 3 ¼	Durasoft

**PERMASHAPE® “FLAT” GOLDEN STAINLESS
FINISHING TROWEL
MT145GSFPDXH (506425)**



- Guaranteed to stay flat use after use
- Made from highest grade stainless steel
- Shaped and tempered to a golden finish
- Size: 356 x 127mm (14 x 5")
- Handle: Durasoft



**PERMASHAPE® “FLAT” STAINLESS STEEL
FINISHING TROWEL
MT13SSFPD (506418)**



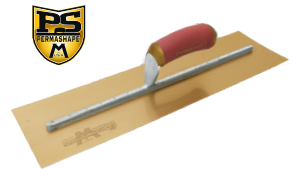
- Guaranteed to stay flat use after use
- Made from highest grade stainless steel
- Properly shaped and tempered
- Size: 330x127mm (13 x 5")
- Handle: Durasoft



**PERMASHAPE® BROKEN-IN GOLDEN STAINLESS
FINISHING TROWEL
MTPB145GDH (511105)**



- Broken-in shape eliminates line and ripple marks right from the start
- Bevelled edges prevent surface aggregate popping
- Size: 356 x 127mm (14 x 5")
- Handle: Durasoft



GOLDEN STAINLESS STEEL POOL TROWEL



- Highest grade hardened and tempered golden stainless steel blade properly shaped and fastened with stainless steel rivets
- Short Aluminium alloy Xtralite® mounting is lightweight but very strong
- Blade is flexible enough to bend to almost any radius



MTSP12GSD

Product Code	Size (mm)	Size (in)	Handle
MTSP10GSD (506621)	254 x 76	10 x 3	Durasoft
MTSP12GSD (506622)	305 x 89	12 x ½	Durasoft
MTSP14GSD (506623)	356 x 102	14 x 4	Durasoft
MTSP16GSD (510808)	406 x 115	16 x 4 ½	Durasoft

**LONDON PATTERN BRICK TROWEL
MT33/13FGXH (506448)**



- Forged from a single piece of high carbon steel, then heat treated for strength and durability
- Handle rise is set for the correct hang and balance
- Size: 330x137mm (13 x 5 ¾)
- Handle: Durasoft



MT33/13FGXH

PRO POINTED FINISHING TROWEL RANGE

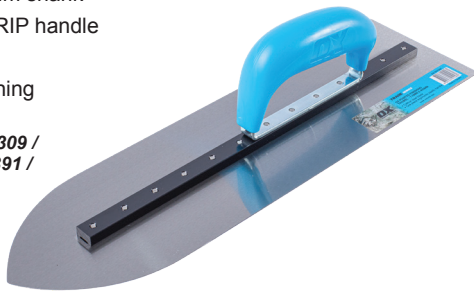
OX-P014601 / OX-P014609 / OX-P014665 /
OX-P014691 / OX-P014692 / OX-P014693

- High grade stainless steel blade
- Heavy duty aluminium shank
- 'Double hung' OXGRIP handle

Also available:

- Trade Pointed Finishing Trowel Range

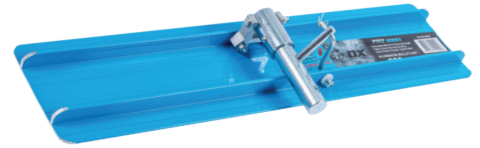
OX-T017301 / OX-T017309 /
OX-T017365 / OX-T017391 /
OX-T017392



PRO ALUMINIUM BULL FLOAT

OX-P016606 / OX-P016609 / OX-P016612

- Heavy duty structural alloy
- Easy to clean powder coated finish



Also available:

- Pro Aluminium Bull Float • Mill Finish

OX-P016406 / OX-P016409 / OX-P016412 / OX-P016415 / OX-P016418

- Pro Telescopic Poles (OX-P016524/OX-P016550)

- Pro Clip Together Poles (OX-P019020/OX-P019024)

MAGNESIUM FLOAT - OXGRIP HANDLE

OX-P017012 / OX-P017016 / OX-P017020

- Heavy duty magnesium blade
- Bevelled ends and rounded corners
- Ergonomic DURAGRIP handle
- Available in 12", 16" and 20"

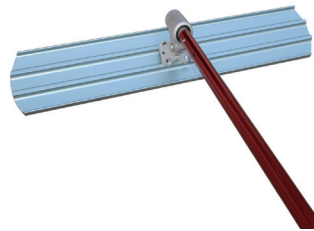
Also available:

- Rounded Ends (OX-P400416)
- Wide Blade (OX-P400517)



ALUMINIUM BULL FLOAT

BN8602



ALUMINIUM BULL FLOAT KITS

Round end aluminium bull floats set :

- 1pc aluminium bull float blade with 4 drilled holes
- 3pcs aluminium swaged handles Ø45mmX1830mm (1-3/4"X72")
- 1pc worm gear bracket
- 1pc red plastic box, which is for easy carry of the tools

PRO 100 X 500MM ALUMINIUM CONCRETE RAKE

- 1500mm long handle with soft grip
- Braced for additional strength
- Aluminium construction - powder coated



SPRAYER

The Smith Industrial Sprayers are built to withstand harsh chemicals and are targeted towards contractor or construction work with ease of use and durability at their core. Each sprayer is fitted with chemical-resistant seals and brass components specially designed for contact with acetone, xylene, bond breakers, curing compounds and other concrete chemicals.



Material Number	Description
OX-P016302	without hook
OX-P016303	with hook

Material Number	Description
NP700096-UNIT	SPS SPRAYER CONC SS S103E

PRO CLAMPED HANDLE SCREED WITH VIAL

OX-P021312 / OX-P021315 / OX-P021318 / OX-P021321 /
OX-P021324 / OX-P021327 / OX-P021330 / OX-P021336

- Available in 1200mm - 3600mm
- Heavy duty structural alloy



PRO STAINLESS STEEL CONCRETE SPRAYER - 13.2L

OX-P040713

- Flexible heavy duty chemical resistant hose
- Superior lock-on trigger assembly
- Ergonomic pump handle



Also available:

- Pro Clamped Handle Screed Without Vial Range

- Available in 1200mm - 3600mm

OX-P021408 / OX-P021412 / OX-P021415 / OX-P021418 / OX-P021421 /
OX-P021424 / OX-P021427 / OX-P021430 / OX-P021436

Also available:

- Pro Backpack Sprayer • 15L (OX-P044715)